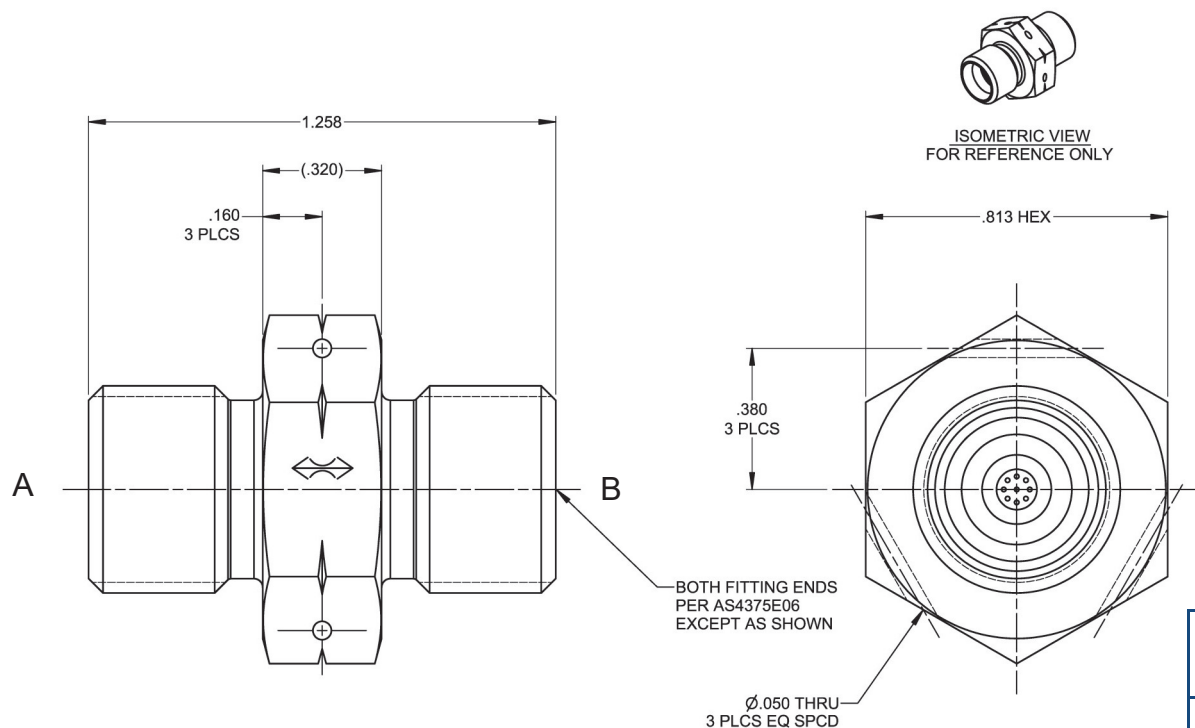




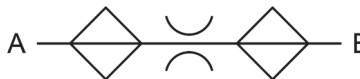
PART NUMBER: 6F4992-X RESTRICTOR VALVE, TWO-WAY, FILTERED



PERFORMANCE SPECIFICATIONS:

FLUIDS: ANY AIRCRAFT HYDRAULIC FLUID
 MATERIAL: BODY 304 CRES
 TEMPERATURE RANGE: -65°F TO 275°F
 OPERATING PRESSURE: 3000 PSIG
 PROOF PRESSURE: 4500 PSIG
 FLOW: SEE TAB BLOCK
 FILTRATION: .011 TO .014 OPENINGS
 WEIGHT: 0.098 LBS MAX

HYDRAULIC SCHEMATIC

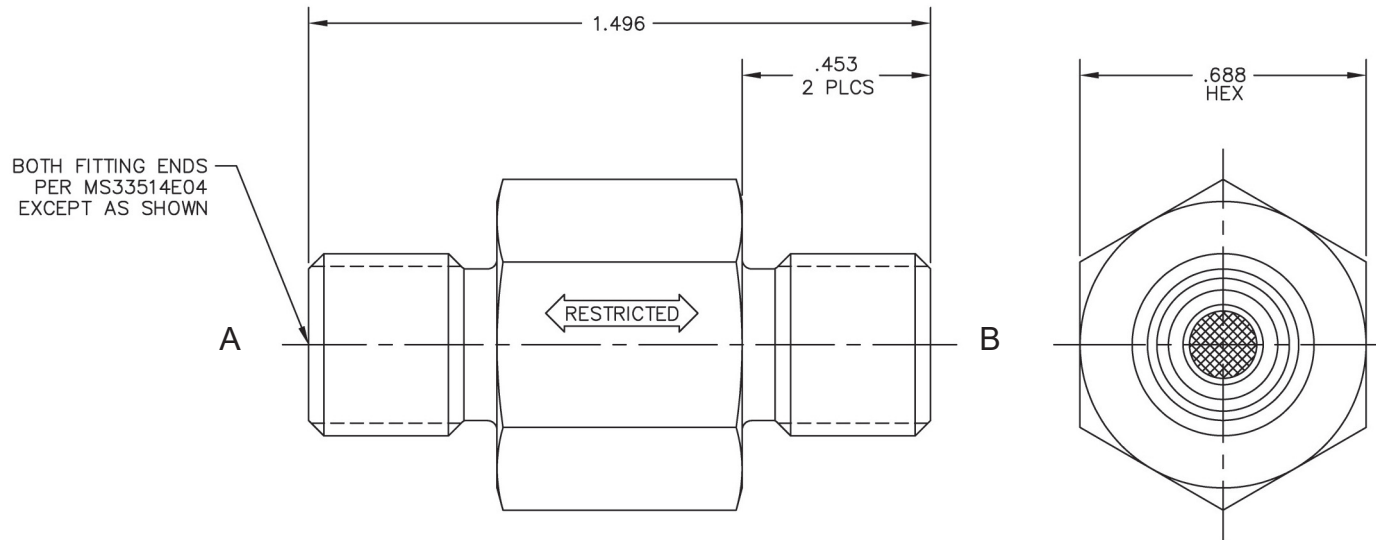


| CRISSAIR PART NO. | FLOW (GPM) | PRESSURE (PSID) | ORIFICE SIZE Ø |
|-------------------|------------|-----------------|----------------|
| 6F4992-1 | 1.95 | 2680 | 0.0422 |
| 6F4992-3 | 2.14 | 2360 | 0.0456 |
| 6F4992-5 | 2.96 | 2900 | 0.0510 |
| 6F4992-7 | 2.28 | 1710 | 0.0511 |
| 6F4992-9 | 2.80 | 2360 | 0.0522 |
| 6F4992-11 | 3.13 | 2590 | 0.0539 |
| 6F4992-13 | 2.55 | 1710 | 0.0540 |
| 6F4992-15 | 3.52 | 2380 | 0.0584 |
| 6F4992-17 | 2.68 | 1390 | 0.0583 |
| 6F4992-19 | 4.18 | 2590 | 0.0623 |
| 6F4992-21 | 4.46 | 2380 | 0.0658 |
| 6F4992-23 | 4.66 | 2180 | 0.0687 |

CATEGORY 3: TWO-WAY RESTRICTOR VALVES FILTERED



PART NUMBER: 6F3960-X RESTRICTOR VALVE, TWO-WAY, FILTERED

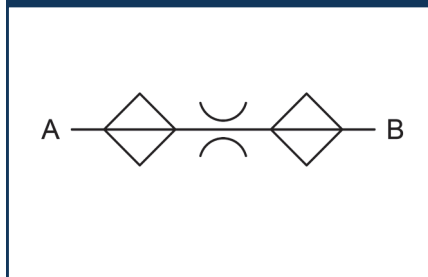


| CRISSAIR DASH NO. | FLOW (GPM) | RESTRICTION PSI/(CIS) ² |
|-------------------|------------|------------------------------------|
| -1 | 1 | 50 |
| -2 | 1 | 100 |
| -3 | 1 | 140 |
| -4 | 1 | 230 |
| -5 | 1 | 320 |
| -6 | .25 / 1 | 450 |
| -7 | .25 / 1 | 600 |
| -8 | .25 | 1700 |
| -9 | .25 | 2500 |
| -10 | .12 / .25 | 3300 |
| -11 | .12 | 3800 |
| -12 | .12 | 4600 |
| -13 | .12 | 7000 |
| -14 | .12 | 10100 |
| -15 | 1 | 5 |
| -16 | 1 | 12 |
| -17 | 1 | 26 |

PERFORMANCE SPECIFICATIONS:

FLUIDS: ANY AIRCRAFT HYDRAULIC FLUID
 MATERIAL: BODY 17-4PH CRES
 TEMPERATURE RANGE: -65°F TO 225°F
 OPERATING PRESSURE: 3000 PSIG
 PROOF PRESSURE: 4500 PSIG
 FLOW: SEE TAB BLOCK
 FILTRATION: .008 TO .012 OPENINGS
 WEIGHT: 0.106 LBS MAX

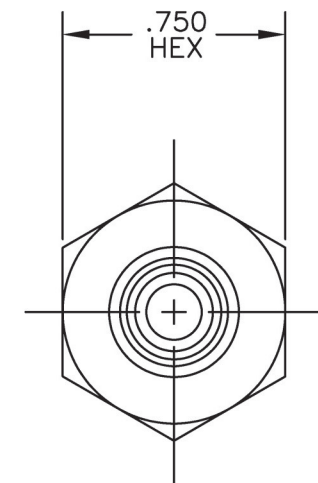
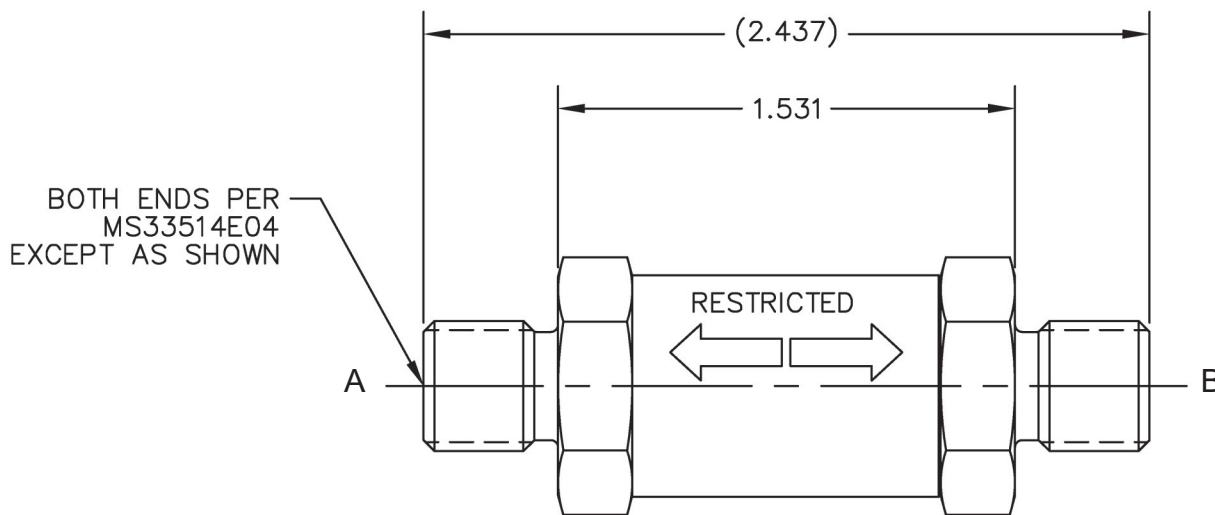
HYDRAULIC SCHEMATIC



CATEGORY 3: TWO-WAY RESTRICTOR VALVES FILTERED



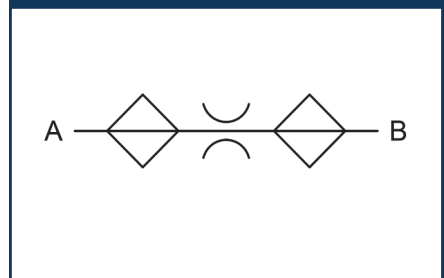
PART NUMBER: 6F1010-X RESTRICTOR VALVE, TWO-WAY, FILTERED



PERFORMANCE SPECIFICATIONS:

FLUIDS: ANY AIRCRAFT HYDRAULIC FLUID
 MATERIAL: BODY 2024-T351 AL
 TEMPERATURE RANGE: -65°F TO 275°F
 OPERATING PRESSURE: 3000 PSIG
 PROOF PRESSURE: 4500 PSIG
 FLOW: RATED FLOW (SEE TAB BLOCK) AT 3000 PSID IN EITHER DIRECTION
 WEIGHT: .07 LBS MAX

HYDRAULIC SCHEMATIC

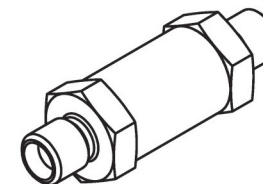


| CRISSAIR PART NO. | FLOW GPM (ORIFICE SIZE) |
|-------------------|-------------------------|
| 6F1010-010 | .125 ± .033 |
| 6F1010-016 | .29 ± .03 |
| 6F1010-018 | .41 ± .05 |
| 6F1010-020 | .60 ± .05 |
| 6F1010-025 | (Ø.025 ± .001) |
| 6F1010-028 | (Ø.028 ± .001) |
| 6F1010-031 | 1.10 ± .10 |
| 6F1010-035 | 1.40 ± .14 |
| 6F1010-037 | 1.70 ± .20 |
| 6F1010-047 | (Ø.047 ± .001) |
| 6F1010-059 | 4.50 ± .50 |

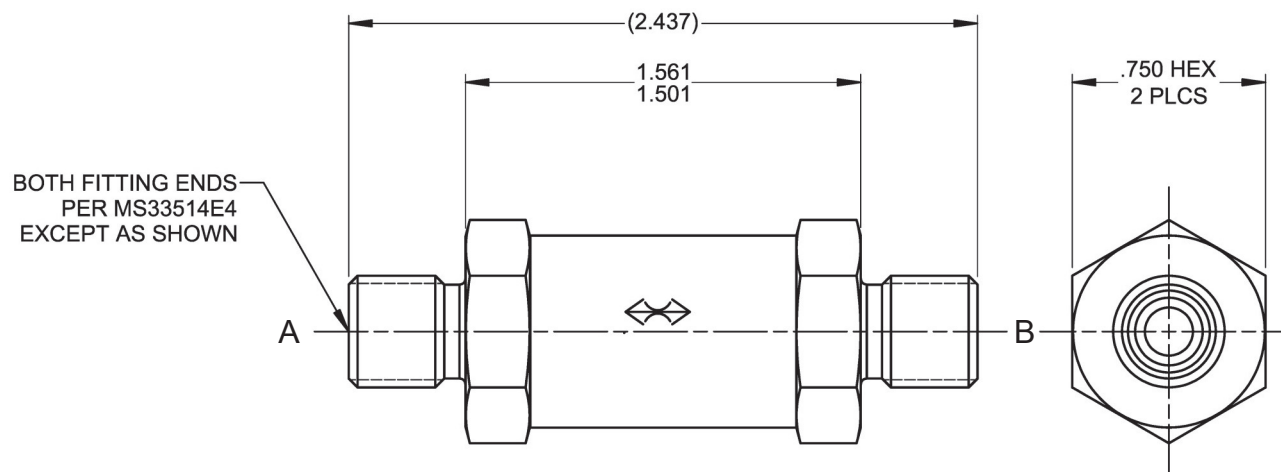
CATEGORY 3: TWO-WAY RESTRICTOR VALVES FILTERED



PART NUMBER: 6F4976-X RESTRICTOR VALVE, TWO-WAY, FILTERED



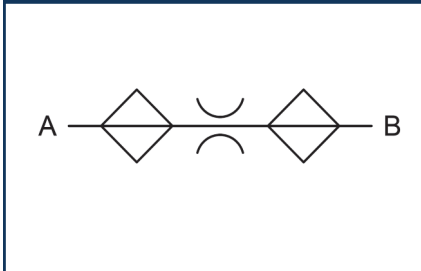
ISOMETRIC VIEW
FOR REFERENCE ONLY



PERFORMANCE SPECIFICATIONS:

FLUIDS: ANY AIRCRAFT HYDRAULIC FLUID
 MATERIAL: BODY 2024-T4 AL
 TEMPERATURE RANGE: -65°F TO 275°F
 OPERATING PRESSURE: 3000 PSIG
 PROOF PRESSURE: 4500 PSIG
 FLOW: SEE TAB BLOCK
 FILTRATION: .010 NOMINAL OPENINGS
 WEIGHT: .076 LBS MAX

HYDRAULIC SCHEMATIC



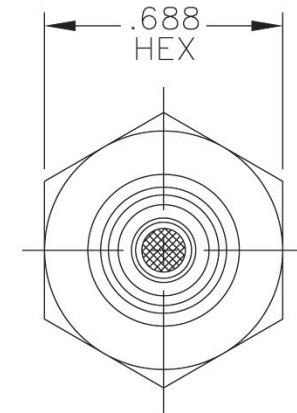
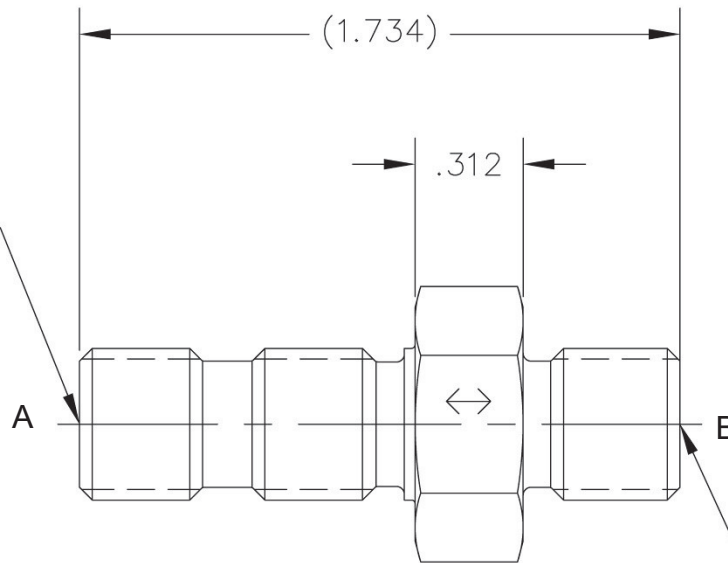
| CRISSAIR DASH NO. | ORIFICE SIZE Ø |
|----------------------|-------------------|
| -021 | .022 |
| -030 | .031 |
| -032 | .033 |
| -037 | .038 |
| -038 | .039 |
| -042 | .043 |
| -050 | .051 |
| -094 | .096 .092 |

CATEGORY 3: TWO-WAY RESTRICTOR VALVES FILTERED



PART NUMBER: 6F2312 RESTRICTOR VALVE, TWO-WAY, FILTERED

FITTING END PER
MS33515E04
EXCEPT AS SHOWN



FITTING END PER
MS33514E04
EXCEPT AS SHOWN

PERFORMANCE SPECIFICATIONS:

FLUIDS: ANY AIRCRAFT HYDRAULIC FLUID

MATERIAL: BODY 431 CRES

TEMPERATURE RANGE: -65°F TO 225°F

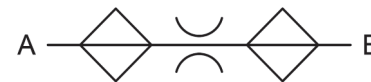
OPERATING PRESSURE: 3000 PSIG

PROOF PRESSURE: 4500 PSIG

FLOW: .344 ± 10% GPM AT 2340 PSID

FILTRATION: .008 TO .012 OPENINGS

HYDRAULIC SCHEMATIC

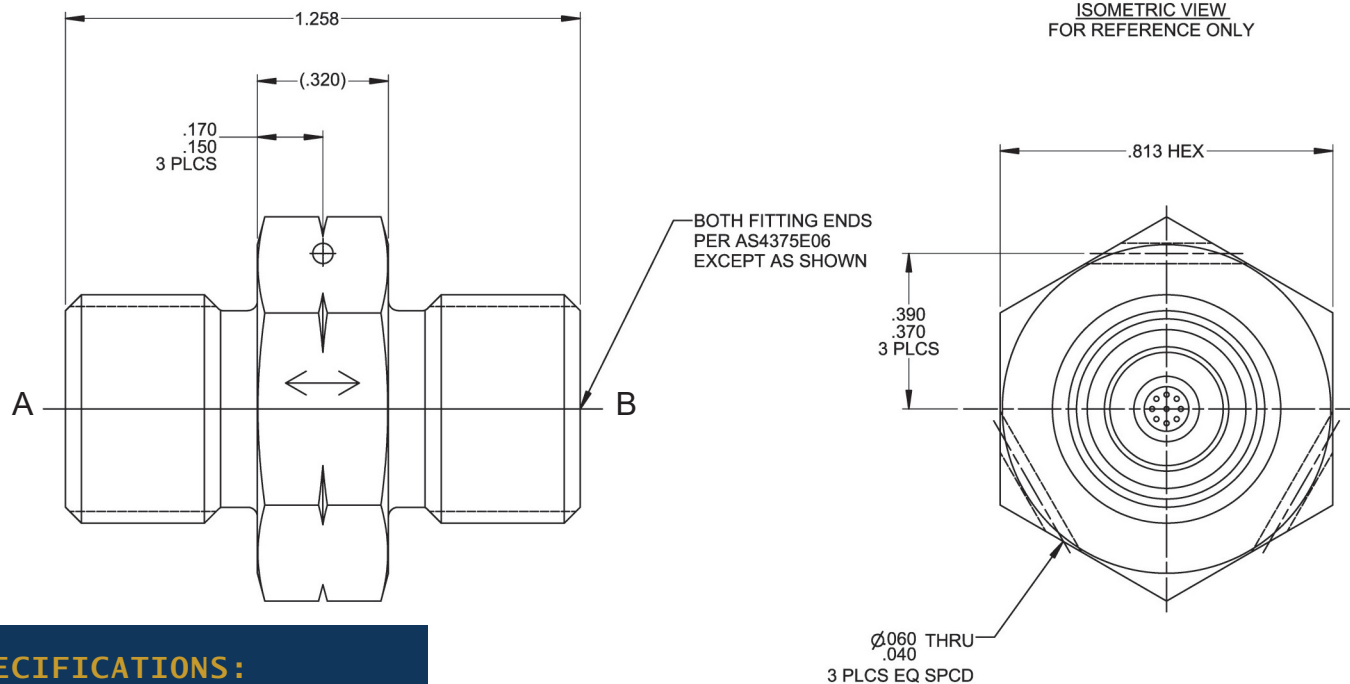




PART NUMBER: 6F4674 RESTRICTOR VALVE, TWO-WAY, FILTERED



ISOMETRIC VIEW
FOR REFERENCE ONLY



PERFORMANCE SPECIFICATIONS:

FLUIDS: ANY AIRCRAFT HYDRAULIC FLUID

MATERIAL: BODY 304 CRES

TEMPERATURE RANGE: -65°F TO 275°F

OPERATING PRESSURE: 3000 PSIG

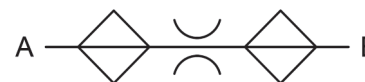
PROOF PRESSURE: 4500 PSIG

FLOW: 3.97 ± 5% GPM AT 1930 PSID (ORIFICE Ø.068)

FILTRATION: .011 TO .014 OPENINGS

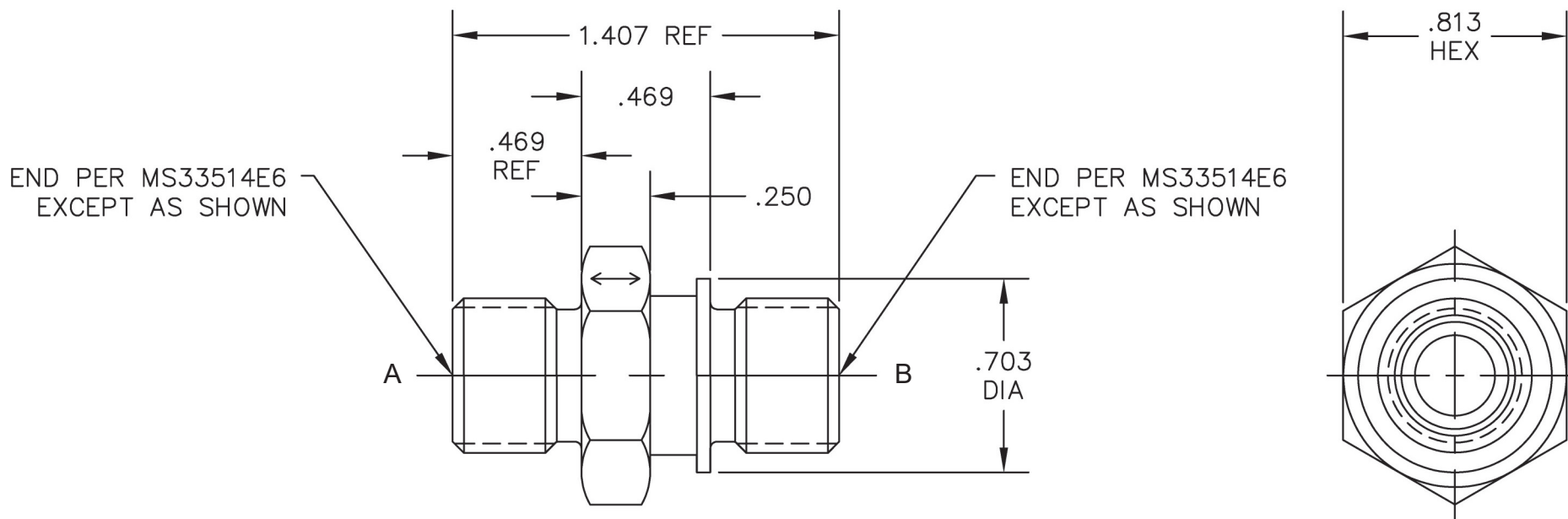
WEIGHT: .098 LBS MAX

HYDRAULIC SCHEMATIC





PART NUMBER: 6F3546, RESTRICTOR VALVE, TWO-WAY, FILTERED



PERFORMANCE SPECIFICATIONS:

FLUIDS: ANY AIRCRAFT HYDRAULIC FLUID

MATERIAL: BODY 17-4 CRES

TEMPERATURE RANGE: -65°F TO 275°F

OPERATING PRESSURE: 4000 PSIG

PROOF PRESSURE: 8000 PSIG

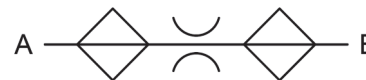
FLOW: 4.4±5% GPM AT 3800±100 PSID REF

(3885 PSIG INLET/85 PSIG OUTLET)

(.058 DIA ORIFICE REF) WITH MIL-H-83282 AT 100°F±10°F

WEIGHT: .095 LBS MAX

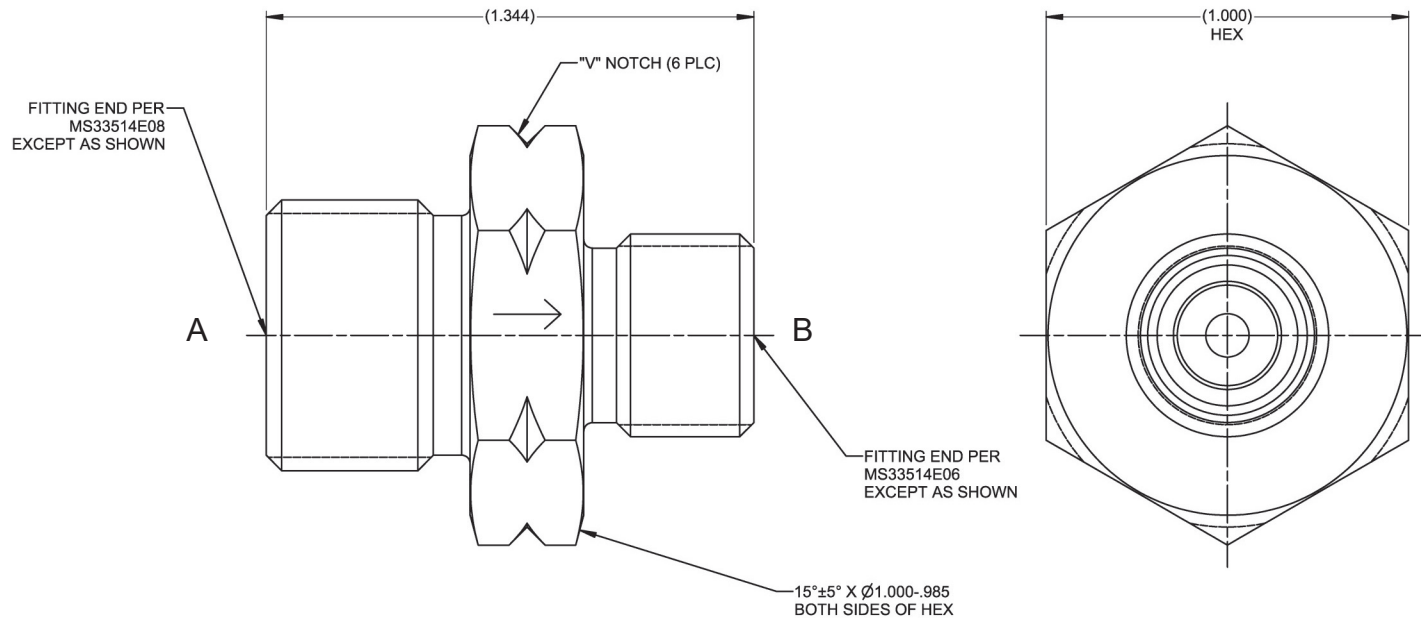
HYDRAULIC SCHEMATIC



CATEGORY 3: TWO-WAY RESTRICTOR VALVES FILTERED



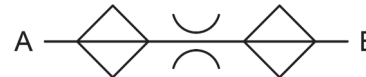
PART NUMBER: 6F3748, RESTRICTOR VALVE, TWO-WAY, FILTERED



PERFORMANCE SPECIFICATIONS:

FLUIDS: ANY AIRCRAFT HYDRAULIC FLUID
MATERIAL: BODY 15-5 CRES
TEMPERATURE RANGE: -65°F TO 275°F
OPERATING PRESSURE: 3000 PSIG
PROOF PRESSURE: 4500 PSIG
FLOW: EQUIVALENT TO A Ø.033 ORIFICE AT 3000 PSID
FILTRATION .008 DIA NOMINAL OPENINGS

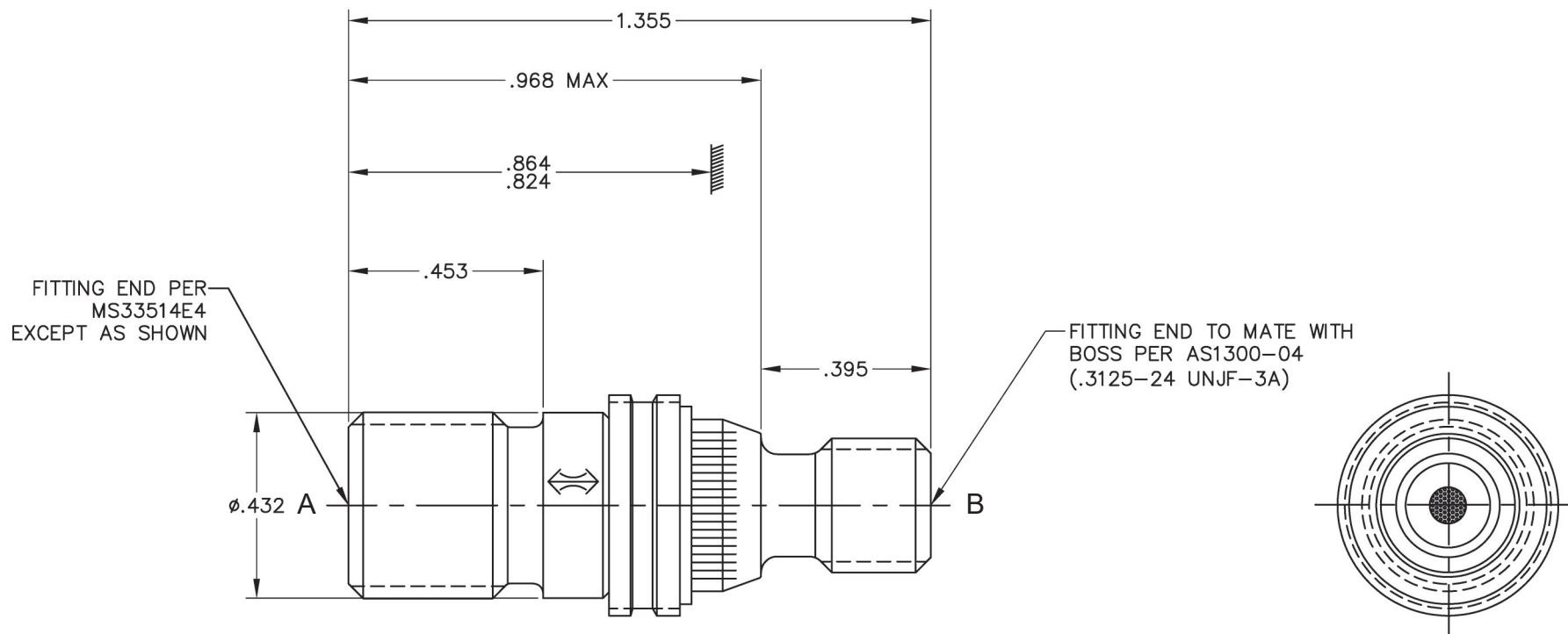
HYDRAULIC SCHEMATIC



CATEGORY 3: TWO-WAY RESTRICTOR VALVES FILTERED



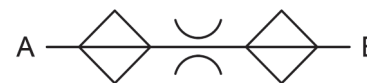
PART NUMBER: 6F4412, RESTRICTOR VALVE, TWO-WAY, FILTERED



PERFORMANCE SPECIFICATIONS:

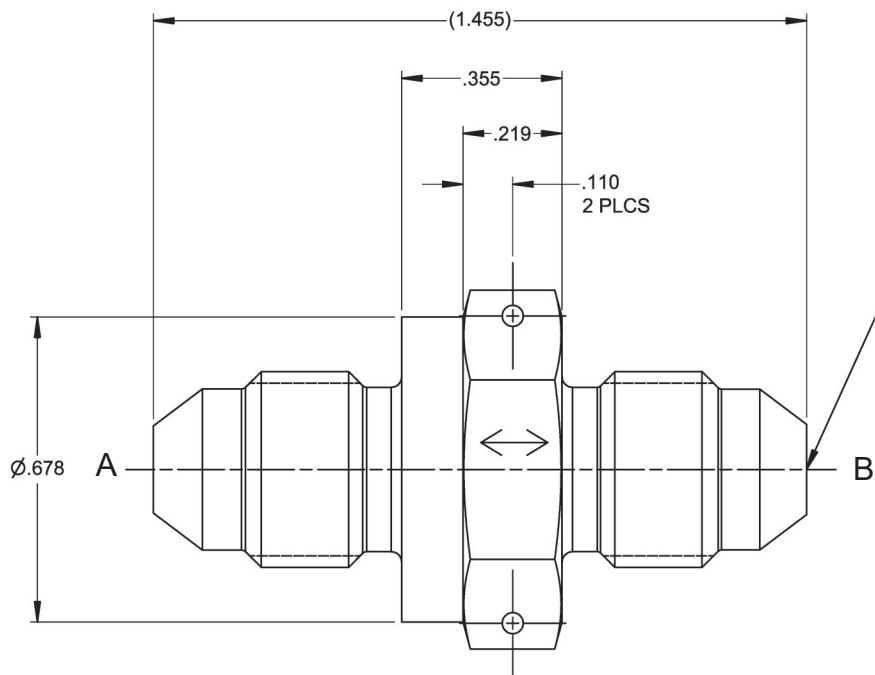
FLUIDS: ANY AIRCRAFT HYDRAULIC FLUID
MATERIAL: BODY 15-5PH CRES
 LOCKRING A-286 CRES
TEMPERATURE RANGE: -65°F TO 275°F
OPERATING PRESSURE: 3000 PSIG
PROOF PRESSURE: 4500 PSIG
FLOW: 1.40 GPM \pm 5% AT 3000 PSID ($\phi .034$)
FILTRATION: $\phi .008$ TO $\phi .012$ OPENINGS
LEAKAGE: EXTERNAL: NONE
WEIGHT: .039 LBS MAX

HYDRAULIC SCHEMATIC



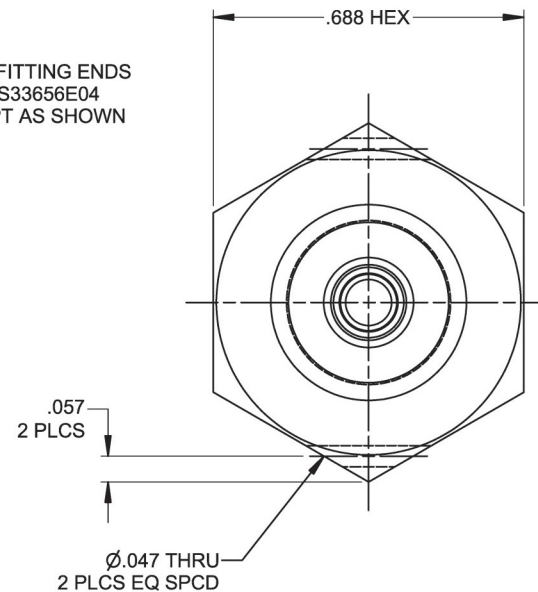


PART NUMBER: 6F4776, RESTRICTOR VALVE, TWO-WAY, FILTERED



ISOMETRIC VIEW
FOR REFERENCE ONLY

BOTH FITTING ENDS
PER MS33656E04
EXCEPT AS SHOWN



PERFORMANCE SPECIFICATIONS:

FLUIDS: ANY AIRCRAFT HYDRAULIC FLUID

MATERIAL: BODY 2024-T351 AL

TEMPERATURE RANGE: -65°F TO 275°F

OPERATING PRESSURE: 3000 PSIG

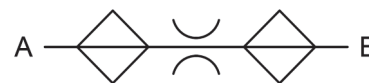
PROOF PRESSURE: 4500 PSIG

FLOW: $\phi .030 \pm .001$ ORIFICE (0.56 \pm 5% GPM AT 950 PSID)

FILTRATION: .005 TO .008 OPENINGS

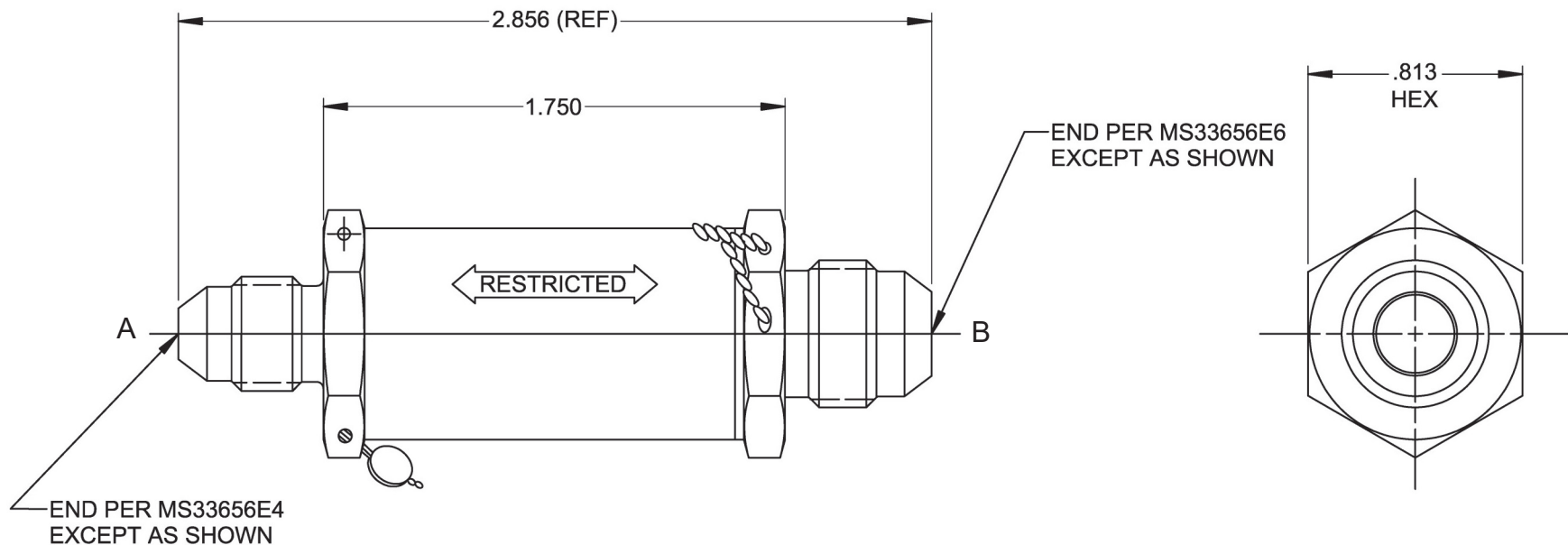
WEIGHT: .028 LBS MAX

HYDRAULIC SCHEMATIC





PART NUMBER: 6F3122, RESTRICTOR VALVE, TWO-WAY, FILTERED



PERFORMANCE SPECIFICATIONS:

FLUIDS: SKYDROL 500 B AND DMS 2014*

MATERIAL: BODY 303 CRES

TEMPERATURE RANGE: -65°F TO 225°F

OPERATING PRESSURE: 3000 PSIG

PROOF PRESSURE: 4500 PSIG

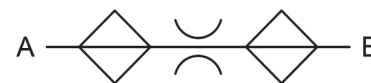
FLOW: 0.52 ± 15% GPM AT 1000 PSID

FILTRATION: .008 TO .012 OPENINGS

WEIGHT: .25 LBS MAX

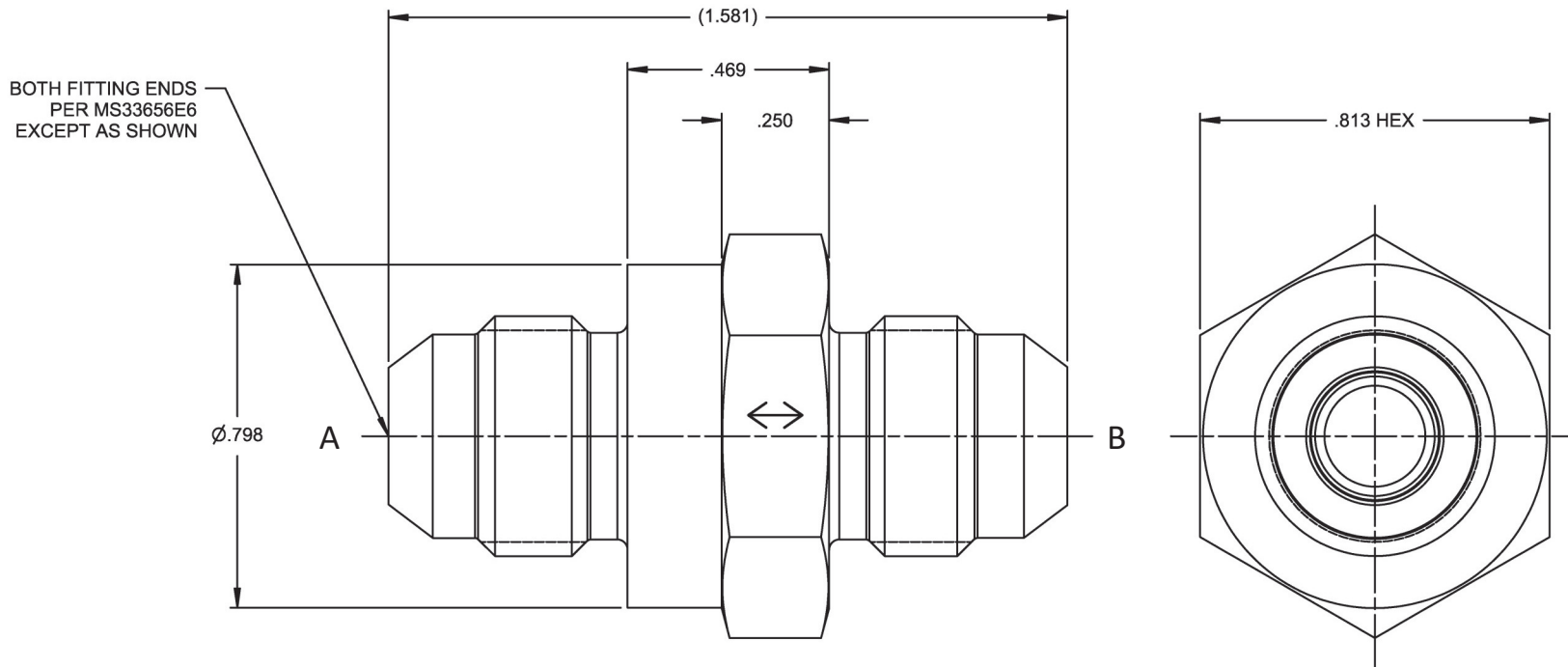
*OTHER FLUIDS MAY BE ACCEPTABLE WITH ELASTOMER CHANGE

HYDRAULIC SCHEMATIC





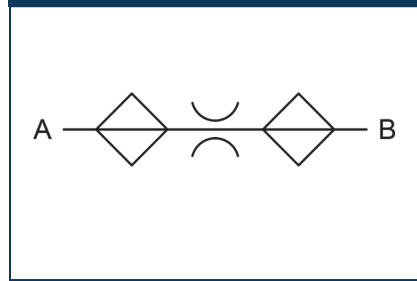
PART NUMBER: 6F3800-X, RESTRICTOR VALVE, TWO-WAY, FILTERED



PERFORMANCE SPECIFICATIONS:

FLUIDS: ANY AIRCRAFT HYDRAULIC FLUID
 MATERIAL: BODY 2024-T351 AL
 TEMPERATURE RANGE: -65°F TO 275°F
 OPERATING PRESSURE: 3000 PSIG
 PROOF PRESSURE: 4500 PSIG
 FLOW: SEE TAB BLOCK
 FILTRATION: .005 TO .008 OPENINGS

HYDRAULIC SCHEMATIC

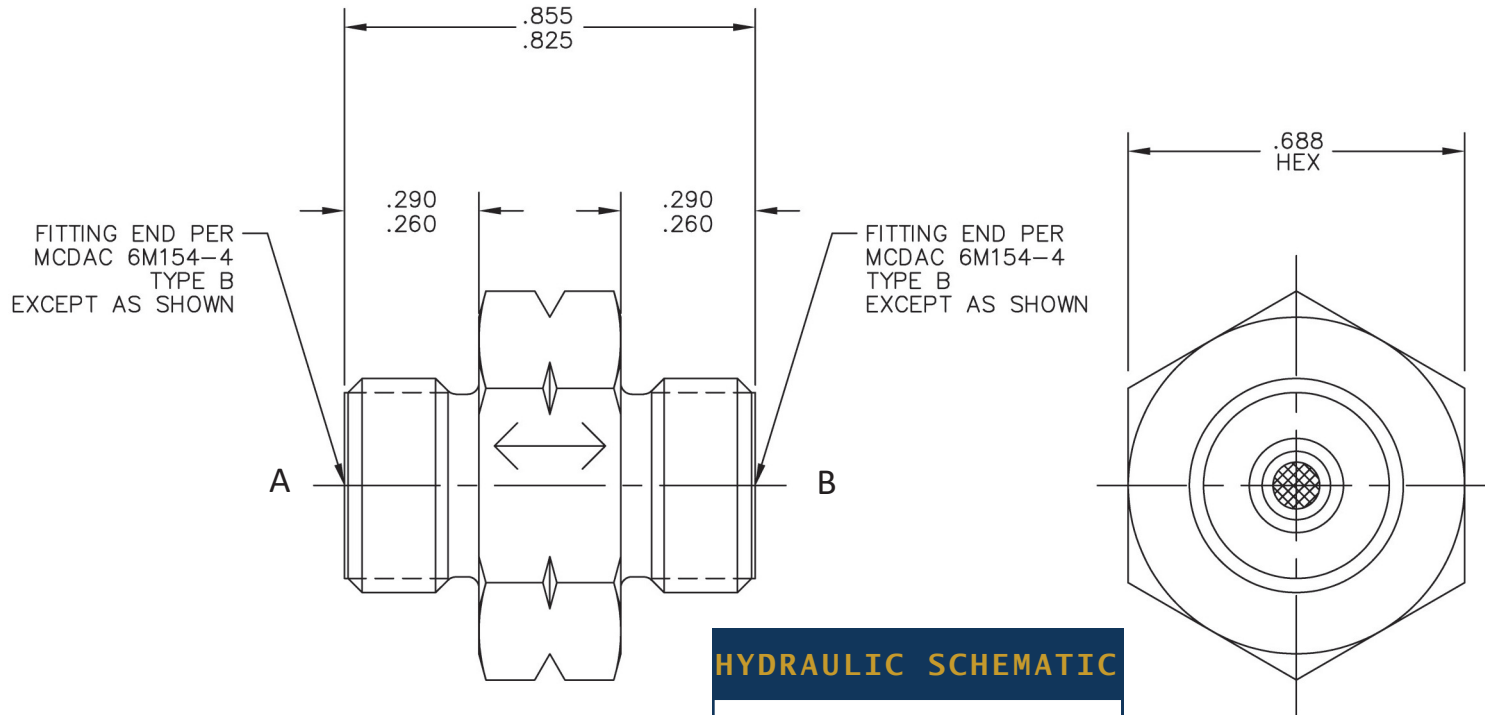


| CRISSAIR PART NO. | FLOW (GPM) REF | PRESS. ΔP (PSID) | ORIFICE DIA $\pm .001$ |
|-------------------|----------------|--------------------------|------------------------|
| 6F3800-1 | 0.45 | 550 | $\phi .030$ |
| 6F3800-2 | 2.69 | 435 | $\phi .078$ |
| 6F3800-3 | 1.80 | 435 | $\phi .064$ |
| 6F3800-4 | 1.24 | 435 | $\phi .053$ |
| 6F3800-5 | 1.86 | 435 | $\phi .065$ |

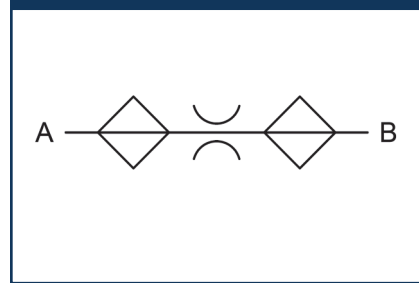
CATEGORY 3: TWO-WAY RESTRICTOR VALVES FILTERED



PART NUMBER: 6FXXXX, RESTRICTOR VALVE, TWO-WAY, FILTERED



HYDRAULIC SCHEMATIC



PERFORMANCE SPECIFICATIONS:

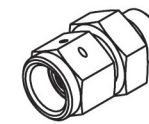
FLUIDS: ANY AIRCRAFT HYDRAULIC FLUID
 MATERIAL: BODY 6AL -4V TI
 TEMPERATURE RANGE: -65°F TO 275°F
 OPERATING PRESSURE: SEE TAB BLOCK
 PROOF PRESSURE: SEE TAB BLOCK
 FLOW: SEE TAB BLOCK
 FILTRATION: .005 TO .008 OPENINGS
 WEIGHT: .041 LBS MAX

| CRISSAIR PART NO. | OPERATING PRESSURE (PSIG) | PROOF PRESSURE (PSIG) | FLOW GPM | PRESS. ΔP (PSID) | ORIFICE DIA |
|-------------------|---------------------------|-----------------------|------------|------------------|-------------|
| 6F4010 | 3000 | 4500 | 0.76 ± 10% | 2000 | Ø.009 |
| 6F4220 | 5000 | 7500 | .390 ± 10% | 4600 | Ø.016 |

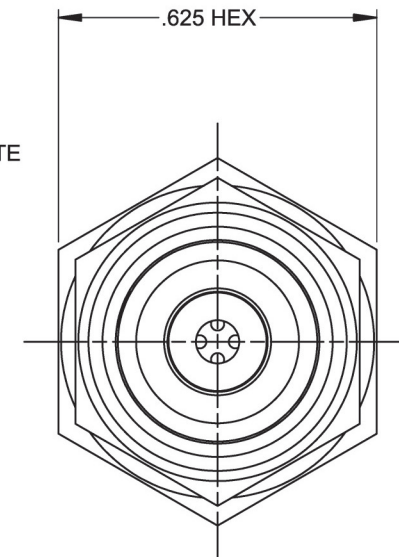
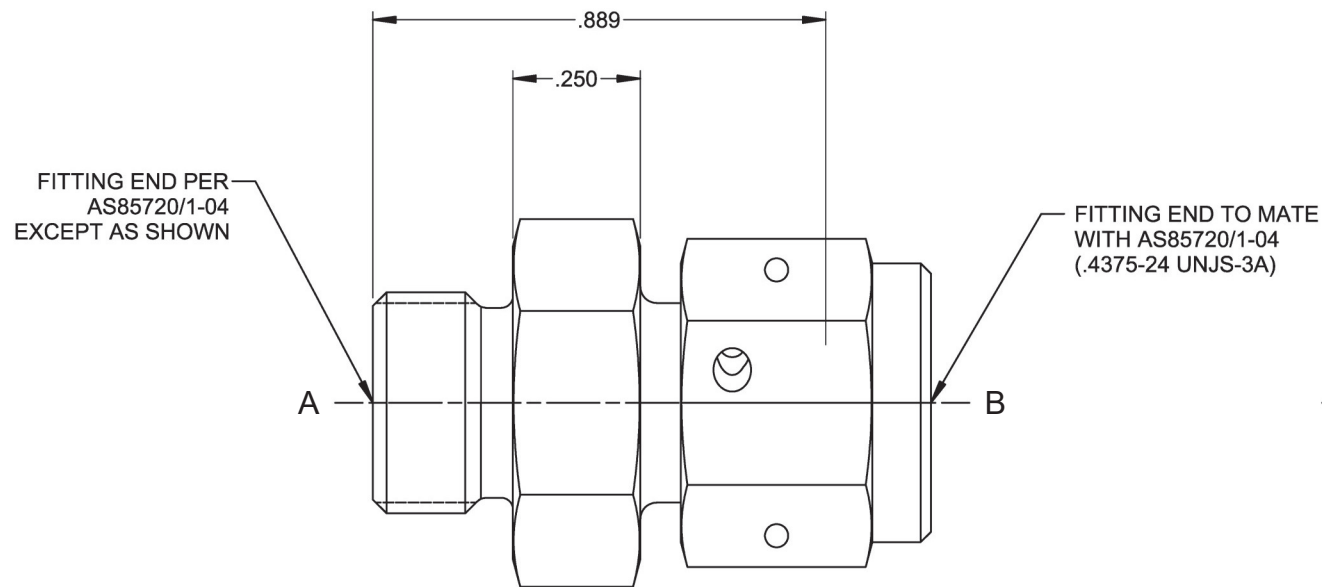
CATEGORY 3: TWO-WAY RESTRICTOR VALVES FILTERED



PART NUMBER: 6F4634, RESTRICTOR VALVE, TWO-WAY, FILTERED



ISOMETRIC VIEW
FOR REFERENCE ONLY



PERFORMANCE SPECIFICATIONS:

FLUIDS: ANY AIRCRAFT HYDRAULIC FLUID

MATERIAL: BODY 17-4PH CRES

SWIVEL NUT 17-4 PH CRES

TEMPERATURE RANGE: -65°F TO 275°F

OPERATING PRESSURE: 5000 PSIG

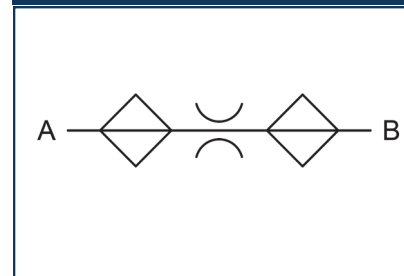
PROOF PRESSURE: 7500 PSIG

FLOW: 3.2 ± 5% GPM AT 5000 PSID (Ø.047 ORIFICE)

FILTRATION .025 TO .028 OPENINGS (25 HOLES MIN)

WEIGHT: .064 LBS MAX

HYDRAULIC SCHEMATIC



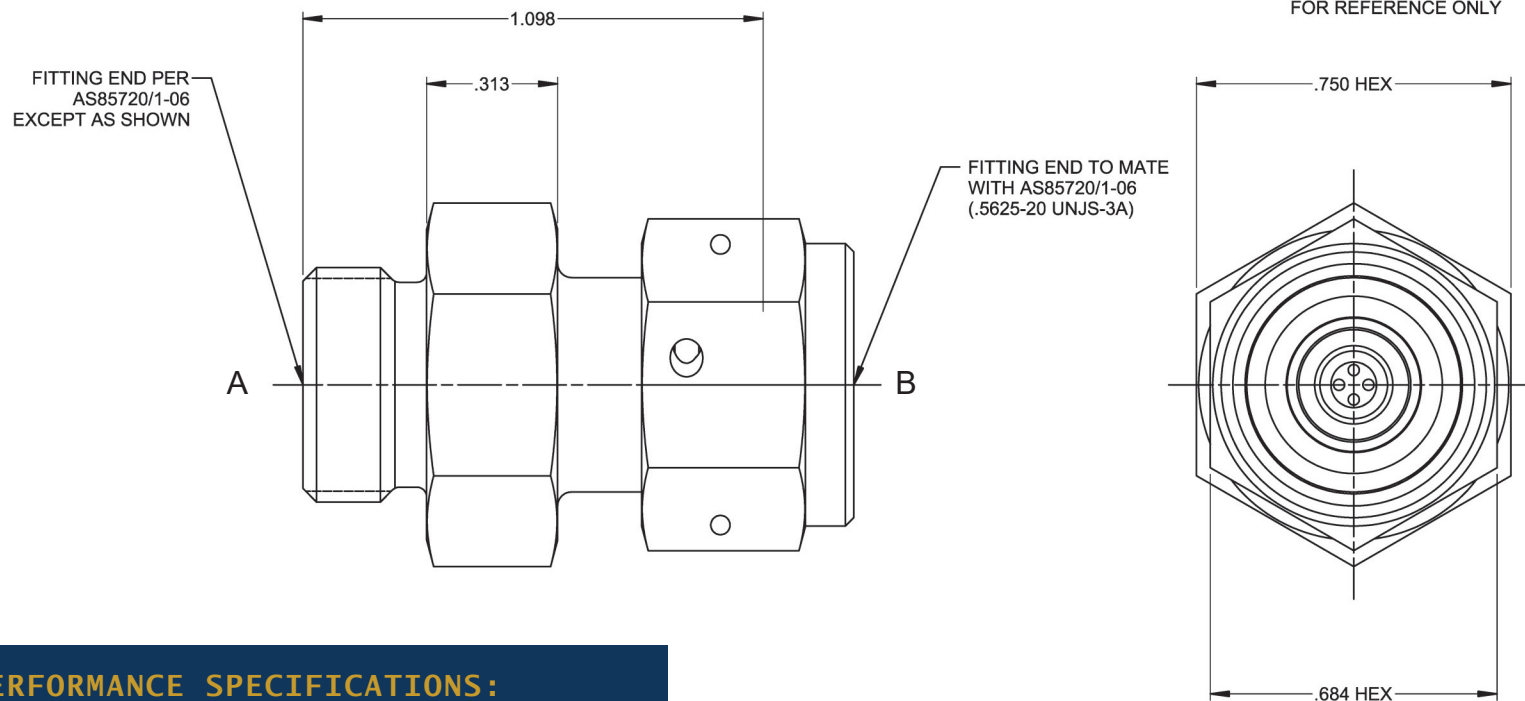
CATEGORY 3: TWO-WAY RESTRICTOR VALVES FILTERED



PART NUMBER: 6F4636, RESTRICTOR VALVE, TWO-WAY, FILTERED



ISOMETRIC VIEW
FOR REFERENCE ONLY



PERFORMANCE SPECIFICATIONS:

FLUIDS: ANY AIRCRAFT HYDRAULIC FLUID

MATERIAL: BODY 17-4PH CRES

SWIVEL NUT 17-4 PH CRES

TEMPERATURE RANGE: -65°F TO 275°F

OPERATING PRESSURE: 5000 PSIG

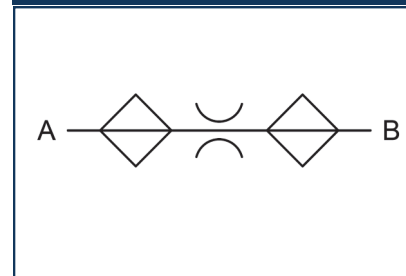
PROOF PRESSURE: 7500 PSIG

FLOW: 3.2 ± 5% GPM AT 5000 PSID (Ø.047 ORIFICE)

FILTRATION .025 TO .028 OPENINGS (25 HOLES MIN)

WEIGHT: .115 LBS MAX

HYDRAULIC SCHEMATIC

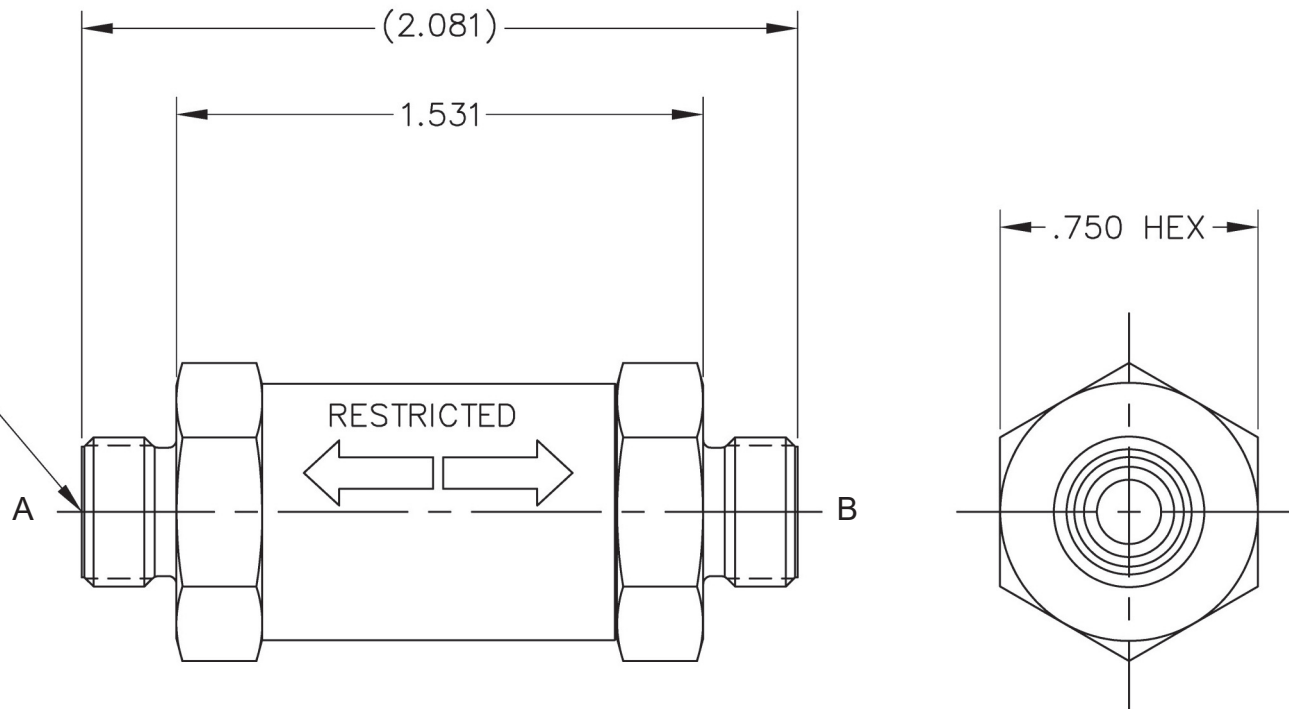


CATEGORY 3: TWO-WAY RESTRICTOR VALVES FILTERED



PART NUMBER: 6F4380, RESTRICTOR VALVE, TWO-WAY, FILTERED

BOTH ENDS PER
DYNATUBE R44090-4
(.4375-24 UNJS-3A)
EXCEPT AS SHOWN



PERFORMANCE SPECIFICATIONS:

FLUIDS: HYDRAULIC FLUID PER MIL-H-5606*

MATERIAL: BODY 17-4PH CRES

TEMPERATURE RANGE: -65°F TO 275°F

OPERATING PRESSURE: 3000 PSIG

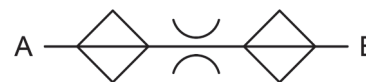
PROOF PRESSURE: 4500 PSIG

FLOW: .85 ± 10% GPM AT 3000 PSID (Ø.027 ORIFICE)

WEIGHT: .177 LBS MAX

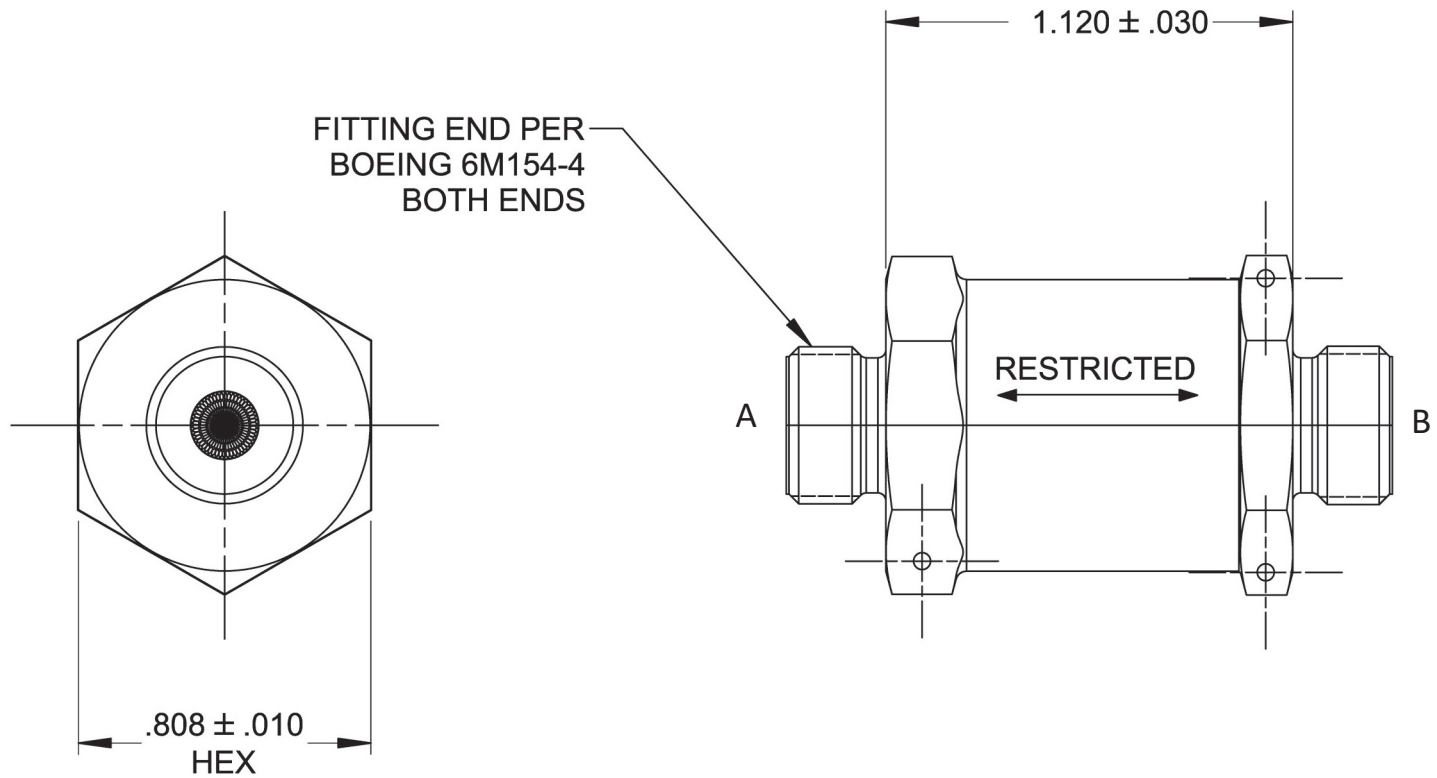
*OTHER FLUIDS MAY BE ACCEPTABLE WITH ELASTOMER CHANGE

HYDRAULIC SCHEMATIC





PART NUMBER: 6F3258-X, RESTRICTOR VALVE, TWO-WAY, FILTERED



PERFORMANCE SPECIFICATIONS:

FLUIDS: HYDRAULIC FLUID PER MIL-H-5606 AND MIL-H-83282*

MATERIAL: BODY 17-4PH CRES

TEMPERATURE RANGE: -65°F TO 275°F

OPERATING PRESSURE: 3000 PSIG

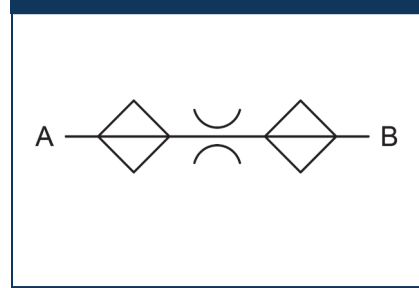
PROOF PRESSURE: 4500 PSIG

FLOW: SEE TAB BLOCK AT 3000 PSID MAX

WEIGHT: .15 LBS MAX

*OTHER FLUIDS MAY BE ACCEPTABLE WITH ELASTOMER CHANGE

HYDRAULIC SCHEMATIC

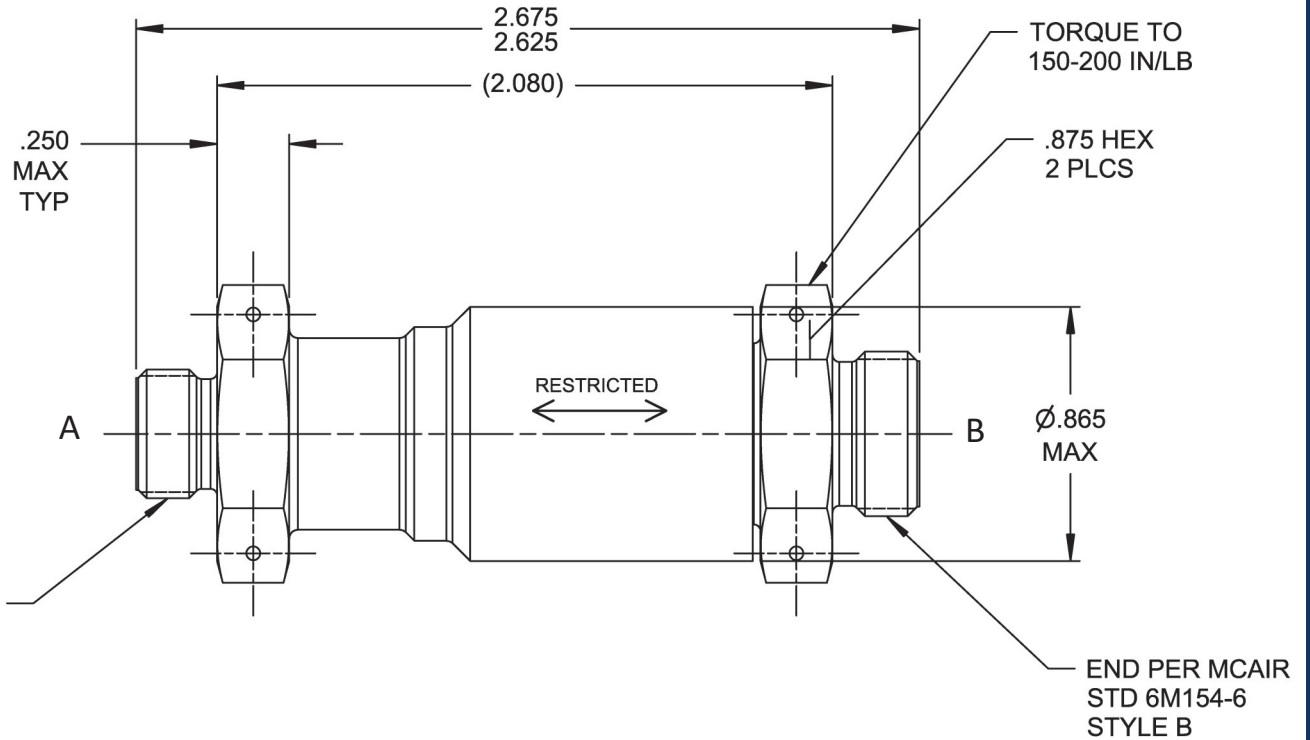
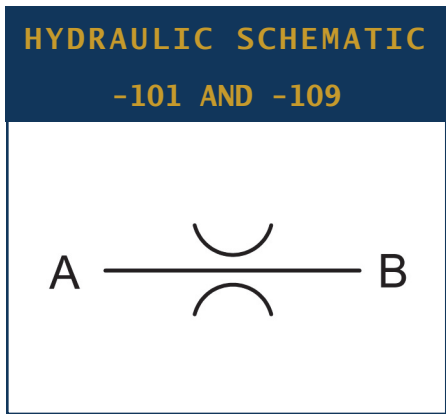


| CRISSAIR PART NO. | FLOW (GPM) |
|-------------------|------------|
| 6F3258-1 | 0.41 ± 10% |
| 6F3258-2 | 1.90 ± 10% |
| 6F3258-3 | 0.20 ± 10% |
| 6F3258-4 | 1.20 ± 10% |

CATEGORY 3: TWO-WAY RESTRICTOR VALVES FILTERED



PART NUMBER: 6F3010, TWO-WAY FILTERED HYDRAULIC RESTRICTOR



PERFORMANCE SPECIFICATIONS:

FLUIDS: HYDRAULIC RED OIL PER MIL-H5606,
MIL-H46170, MIL-H-83282 & MIL-H-6083*

MATERIAL: BODY 17-4PH CRES

Temperature range: -65°F to 275°F

operating PRESSURE: 3000 PSIG

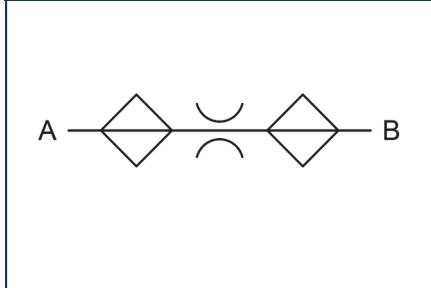
PROOF PRESSURE: 4500 PSIG

FLOW: SEE TAB BLOCK

WEIGHT: .30 LBS MAX

*OTHER FLUIDS MAY BE ACCEPTABLE WITH ELASTOMER CHANGE

**HYDRAULIC SCHEMATIC
-103 AND -105**

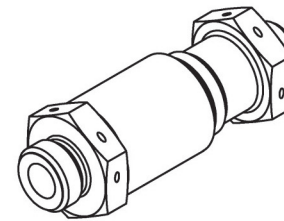


| CRISSAIR PART NO. | FLOW (GPM) | PRESS. ΔP (PSID) | ORIFICE DIA (REF) |
|----------------------|---------------|------------------------|----------------------|
| 6F3010-101 | 4.77 ± 10% | 200 | .104 |
| 6F3010-103 | 4.59 ± 10% | 3000 | .063 |
| 6F3010-105 | 2.66 ± 10% | 3000 | .048 |
| 6F3010-109 | 6.50 ± 10% | 3000 | .075 |

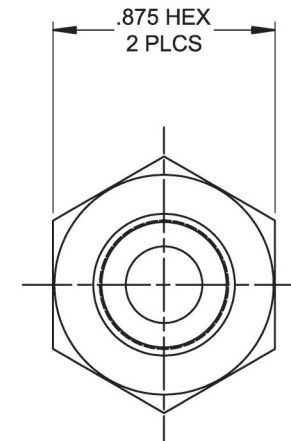
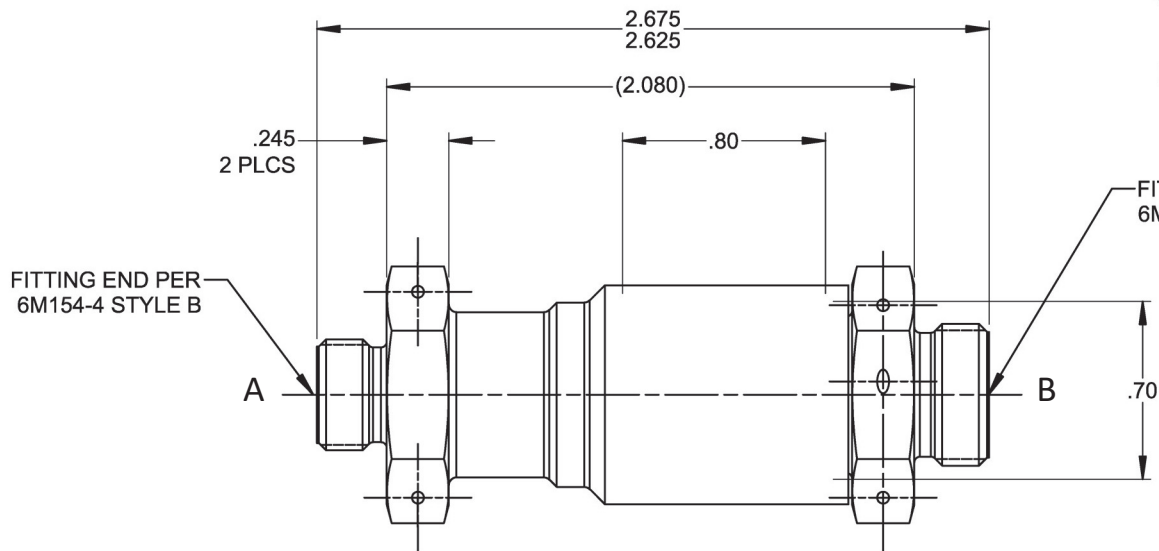
CATEGORY 3: TWO-WAY RESTRICTOR VALVES FILTERED



PART NUMBER: 6F4934-X, RESTRICTOR VALVE, TWO-WAY, FILTERED



ISOMETRIC VIEW
FOR REFERENCE ONLY



PERFORMANCE SPECIFICATIONS:

FLUIDS: AIRCRAFT HYDRAULIC FLUID PER MIL-PRF-83282*

MATERIAL: BODY 17-4PH CRES

TEMPERATURE RANGE: -65°F TO 275°F

OPERATING PRESSURE: 3000 PSIG

PROOF PRESSURE: 4500 PSIG

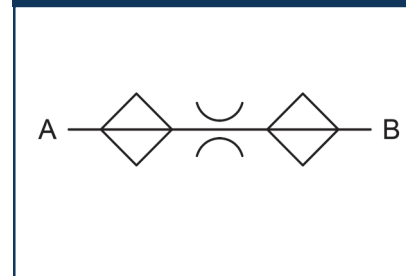
FLOW: SEE TAB BLOCK

FILTRATION: .008 TO .012 OPENINGS

WEIGHT: 0.294 LBS MAX

*OTHER FLUIDS MAY BE ACCEPTABLE WITH ELASTOMER CHANGE

HYDRAULIC SCHEMATIC

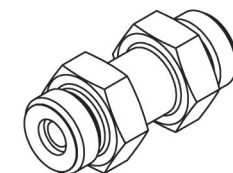


| CRISSAIR PART NO. | FLOW GPM ±10% | PRESS. ΔP (PSID) | ORIFICE Ø |
|-------------------|---------------|------------------|-----------|
| 6F4934-1 | 0.50 | 500 | .0324 |
| 6F4934-3 | 1.00 | 550 | .0448 |
| 6F4934-4 | 1.00 | 1400 | .0354 |
| 6F4934-5 | 1.00 | 1600 | .0343 |
| 6F4934-6 | 1.25 | 1600 | .0383 |
| 6F4934-7 | 1.50 | 450 | .0577 |
| 6F4934-8 | 1.50 | 1500 | .0427 |
| 6F4934-9 | 1.75 | 1600 | .0454 |
| 6F4934-10 | 3.25 | 3000 | .0528 |

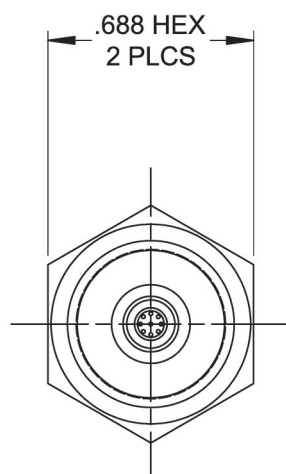
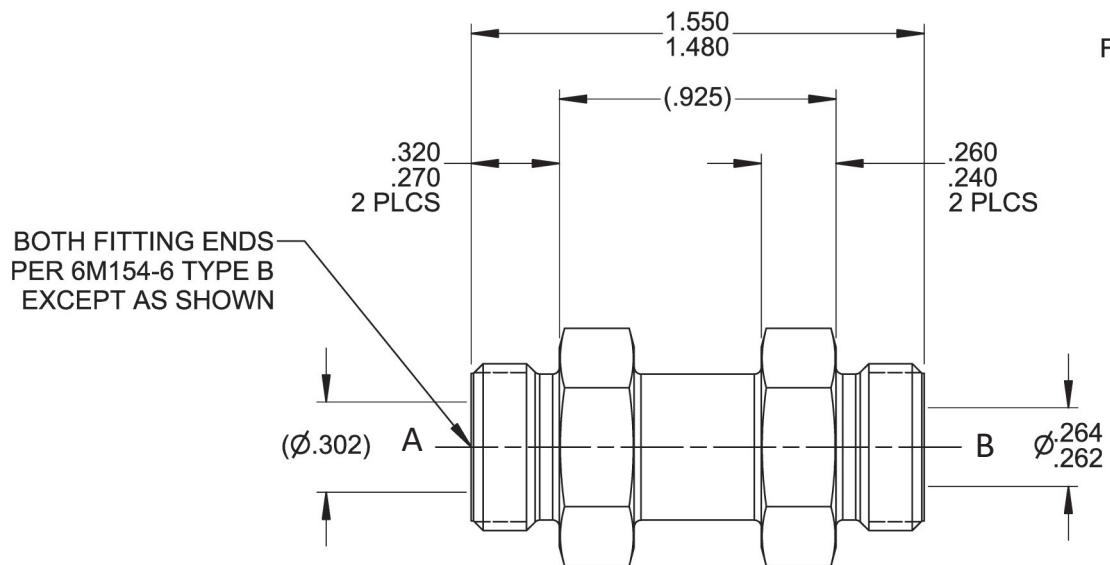
CATEGORY 3: TWO-WAY RESTRICTOR VALVES FILTERED



PART NUMBER: 6F4932-X, RESTRICTOR VALVE, TWO-WAY, FILTERED



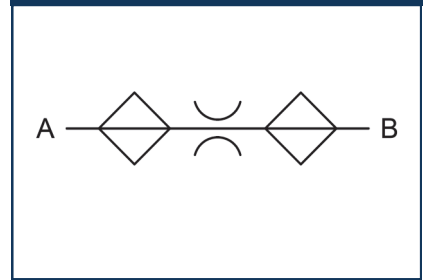
ISOMETRIC VIEW FOR REFERENCE ONLY



PERFORMANCE SPECIFICATIONS:

FLUIDS: ANY AIRCRAFT HYDRAULIC FLUID
 MATERIAL: BODY 6AL-4V TI
 TEMPERATURE RANGE: -65°F TO 275°F
 OPERATING PRESSURE: 3000 PSIG
 PROOF PRESSURE: 7500 PSIG
 FLOW: SEE TAB BLOCK
 FILTRATION: .011 TO .014 OPENINGS
 WEIGHT: 0.065 LBS MAX

HYDRAULIC SCHEMATIC

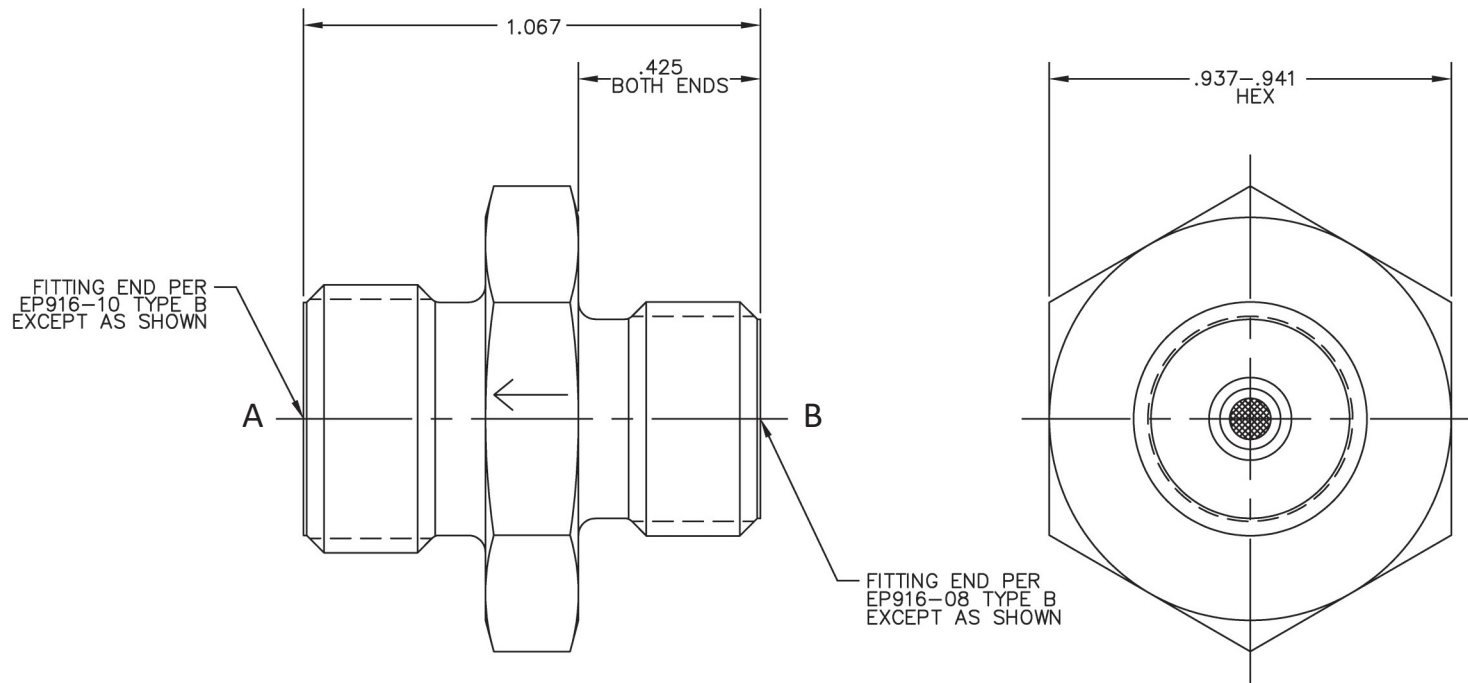


| CRISSAIR PART NO. | FLOW GPM ±10% | PRESS. ΔP (PSID) | ORIFICE Ø |
|-------------------|---------------|------------------|-----------|
| 6F4932-1 | 1.00 | 450 | .0471 |
| 6F4932-2 | 1.75 | 600 | .0579 |
| 6F4932-3 | 1.75 | 800 | .0539 |
| 6F4932-4 | 1.75 | 1600 | .0454 |

CATEGORY 3: TWO-WAY RESTRICTOR VALVES FILTERED



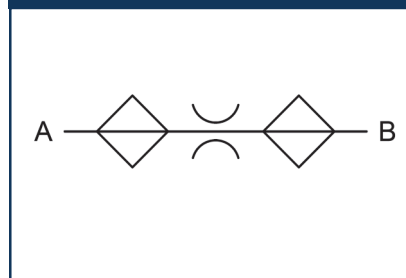
PART NUMBER: 6F3576, RESTRICTOR VALVE, TWO-WAY, FILTERED



PERFORMANCE SPECIFICATIONS:

FLUIDS: ANY AIRCRAFT HYDRAULIC FLUID
MATERIAL: BODY 6AL-4V TI
TEMPERATURE RANGE: -65°F TO 275°F
OPERATING PRESSURE: 3000 PSIG
PROOF PRESSURE: 8000 PSIG
FLOW: .13 GPM AT 2837 PSID (Ø.011 ORIFICE)
FILTRATION: .005 TO .008 OPENINGS
WEIGHT: 0.077 LBS MAX

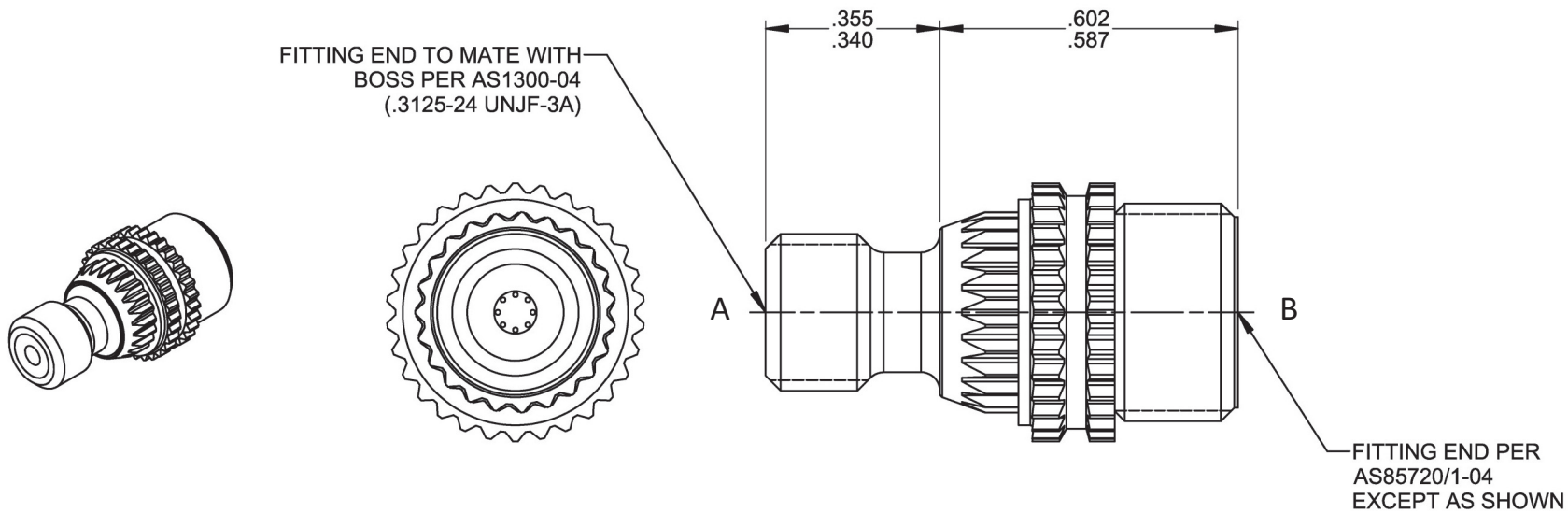
HYDRAULIC SCHEMATIC



CATEGORY 3: TWO-WAY RESTRICTOR VALVES FILTERED



PART NUMBER: 6F4834, RESTRICTOR VALVE, TWO-WAY, FILTERED



PERFORMANCE SPECIFICATIONS:

FLUIDS: ANY AIRCRAFT HYDRAULIC FLUID

MATERIAL: BODY 6AL-4V TI

LOCKRING 1-286 CRES

TEMPERATURE RANGE: -65°F TO 275°F

OPERATING PRESSURE: 4000 PSIG

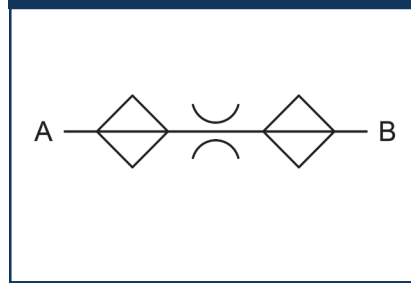
PROOF PRESSURE: 6000 PSIG

FLOW: 1.0 ± 5% GPM AT 3900 PSID (Ø.028 ORIFICE)

FILTRATION: .008 NOMINAL OPENINGS

WEIGHT: 0.02 LBS MAX

HYDRAULIC SCHEMATIC



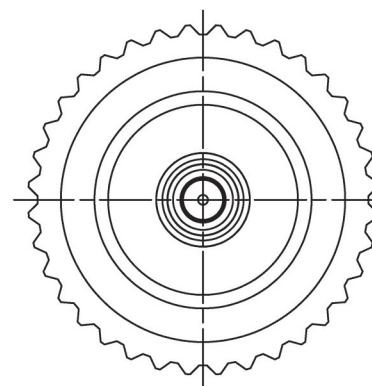
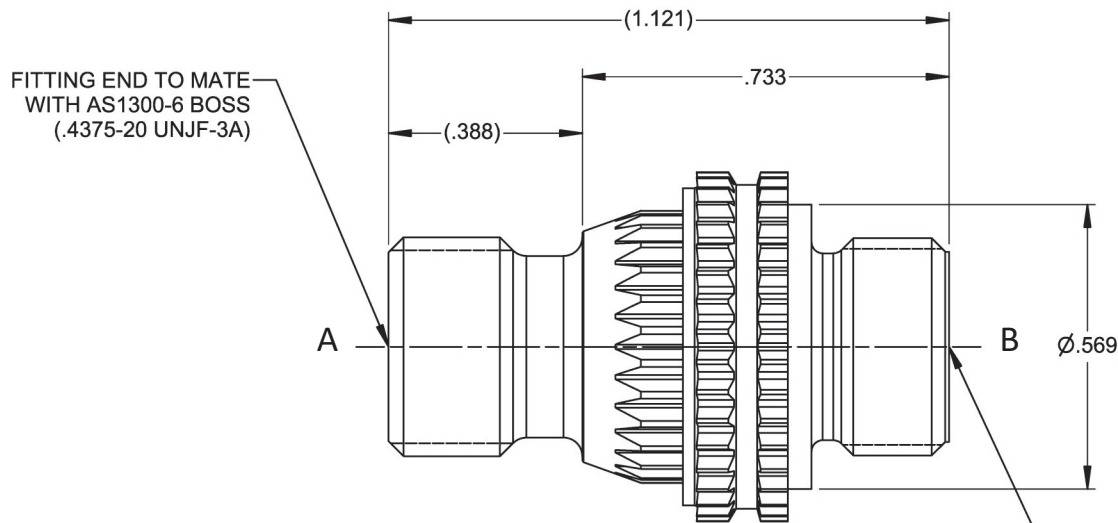
CATEGORY 3: TWO-WAY RESTRICTOR VALVES FILTERED



PART NUMBER: 6F4602-X, RESTRICTOR VALVE, TWO-WAY, FILTERED



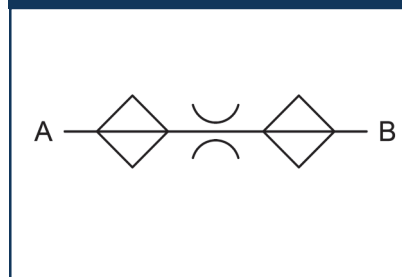
ISOMETRIC VIEW
FOR REFERENCE ONLY



PERFORMANCE SPECIFICATIONS:

FLUIDS: ANY AIRCRAFT HYDRAULIC FLUID
 MATERIAL: BODY 6AL-4V TI
 LOCKRING A-286 CRES
 TEMPERATURE RANGE: -65°F TO 275°F
 OPERATING PRESSURE: 4000 PSIG
 PROOF PRESSURE: 6000 PSIG
 FLOW: SEE TAB BLOCK AT 4000 PSID MAX
 WEIGHT: 0.04 LBS MAX

HYDRAULIC SCHEMATIC

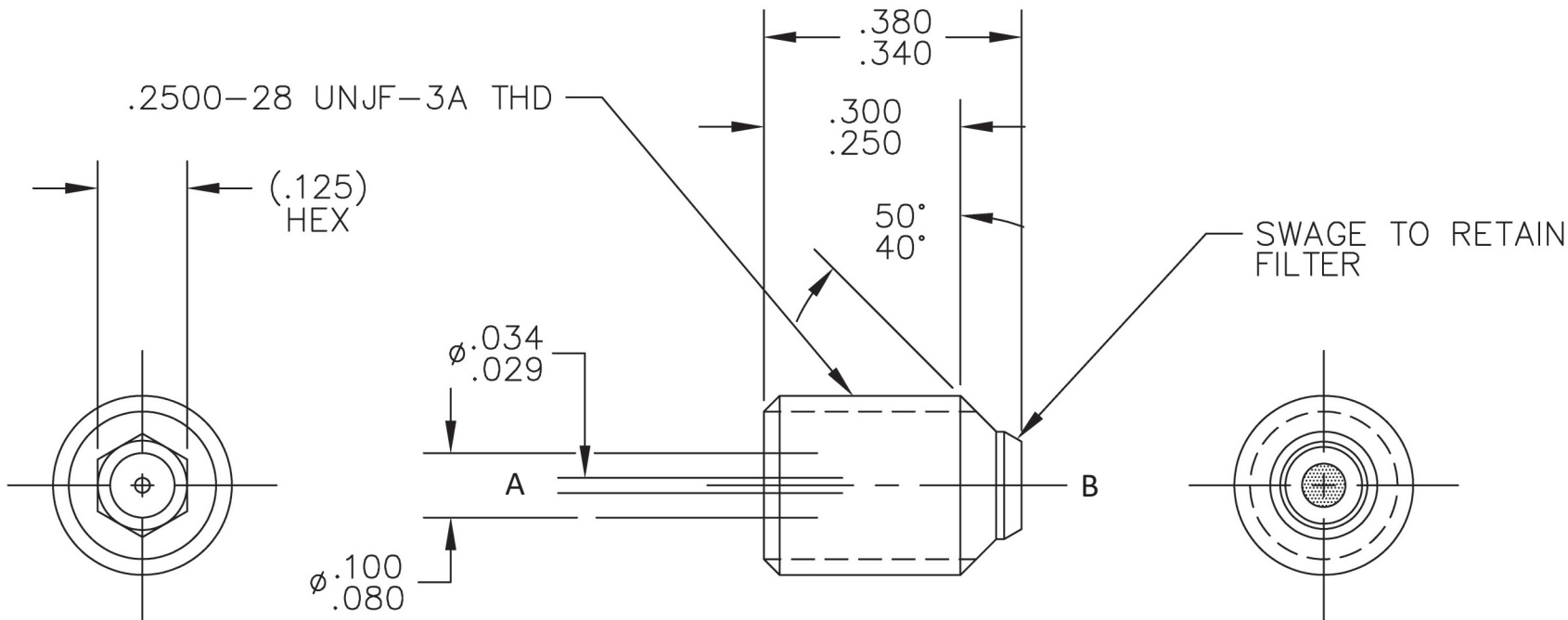


| CRISSAIR PART NO. | FLOW GPM ± 5% | ORIFICE Ø | LOHM (REF) |
|-------------------|---------------|-----------|------------|
| 6F4602-1 | 2.12 | .040 | 650 ± 5% |
| 6F4602-3 | 1.72 | .036 | 800 ± 5% |
| 6F4602-5 | 1.38 | .032 | 1000 ± 5% |

CATEGORY 3: TWO-WAY RESTRICTOR VALVES FILTERED



PART NUMBER: 6F4274, RESTRICTOR VALVE, TWO-WAY, FILTERED



PERFORMANCE SPECIFICATIONS:

FLUIDS: ANY AIRCRAFT HYDRAULIC FLUID

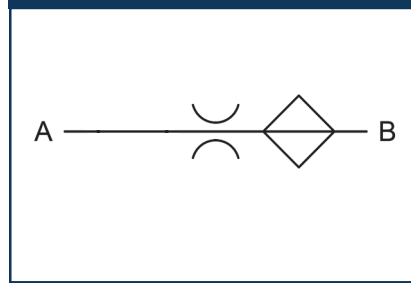
MATERIAL: BODY 304L CRES

TEMPERATURE RANGE: -65°F TO 275°F

FLOW: $\phi .029$ - $\phi .034$ ORIFICE

WEIGHT: 0.0041 LBS MAX

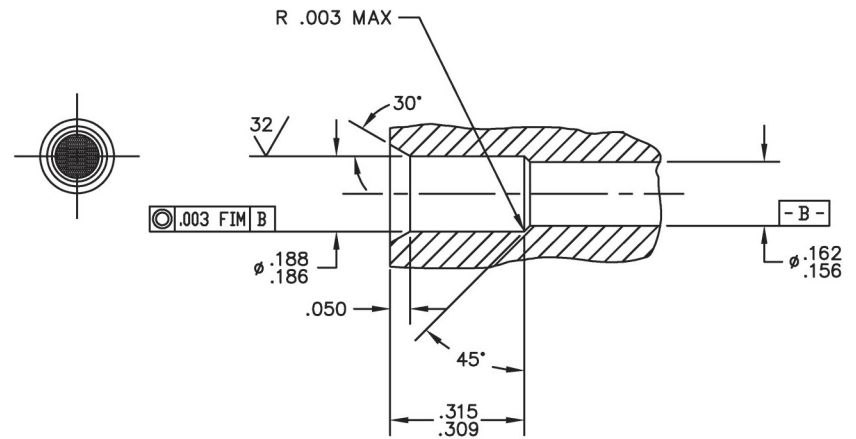
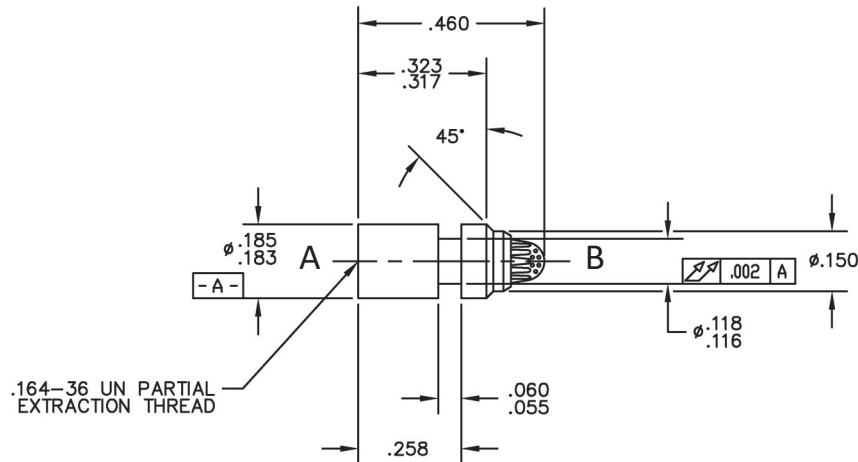
HYDRAULIC SCHEMATIC



CATEGORY 3: TWO-WAY RESTRICTOR VALVES FILTERED



PART NUMBER: 6F3956-X, RESTRICTOR VALVE, TWO-WAY, FILTERED

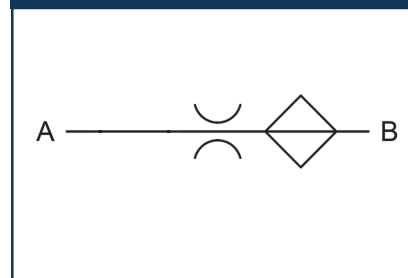


INSTALLATION CAVITY

PERFORMANCE SPECIFICATIONS:

FLUIDS: ANY AIRCRAFT HYDRAULIC FLUID
 MATERIAL: BODY 304 CRES
 TEMPERATURE RANGE: -65°F TO 275°F
 OPERATING PRESSURE: 1000 PSIG
 PROOF PRESSURE: 1500 PSIG
 FLOW: SEE TAB BLOCK AT 100 PSID MAX
 FILTRATION: .006 NOMINAL OPENINGS

HYDRAULIC SCHEMATIC

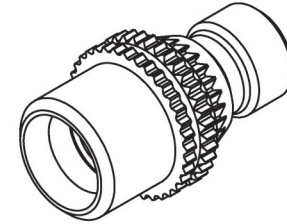
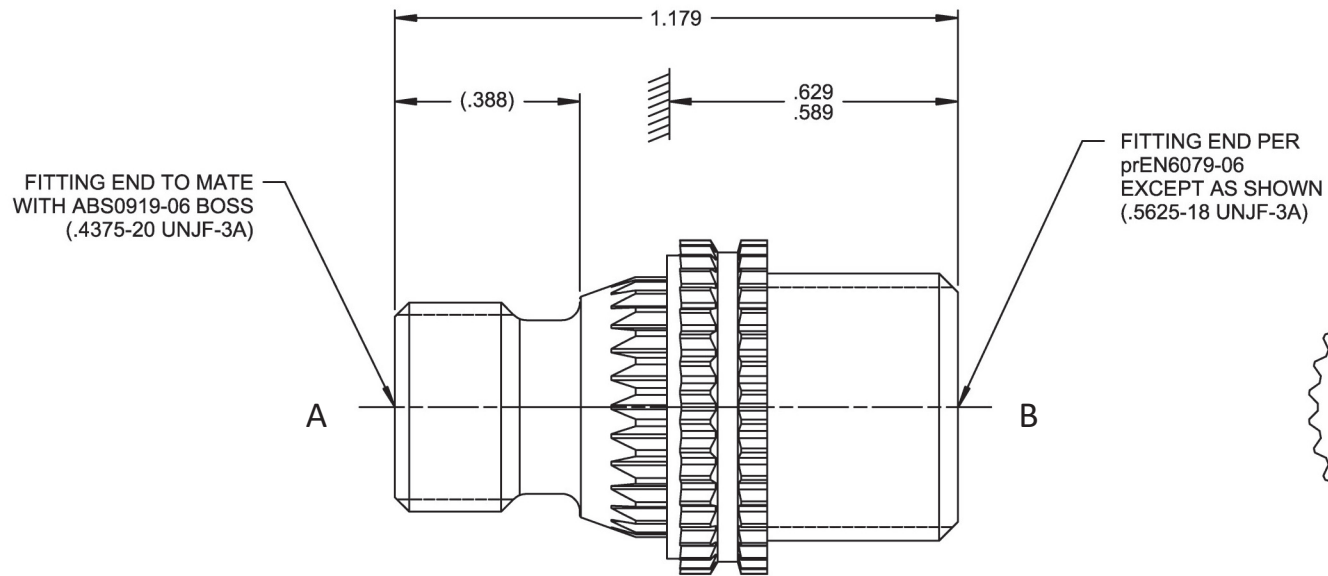


| CRISSAIR PART NO. | FLOW LBS/HR | ORIFICE Ø |
|-------------------|-------------|-----------|
| 6F3956-1 | 12 | .012 |
| 6F3956-2 | 15 | .013 |
| 6F3956-3 | 18 | .014 |
| 6F3956-4 | 23 | .016 |

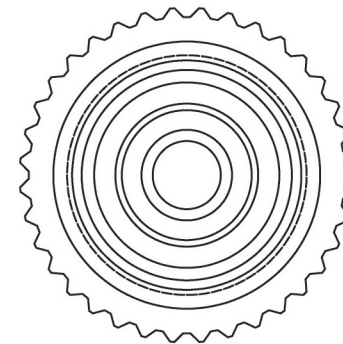
CATEGORY 3: TWO-WAY RESTRICTOR VALVES FILTERED



PART NUMBER: 6F4652-X, RESTRICTOR VALVE, TWO-WAY, FILTERED



ISOMETRIC VIEW FOR REFERENCE ONLY



PERFORMANCE SPECIFICATIONS:

FLUIDS: ANY AIRCRAFT HYDRAULIC FLUID

MATERIAL: BODY 6AL-4V TI

LOCKRING A-286 CRES

TEMPERATURE RANGE: -65°F TO 230°F

OPERATING PRESSURE: 3030 PSIG

PROOF PRESSURE: 4570 PSIG

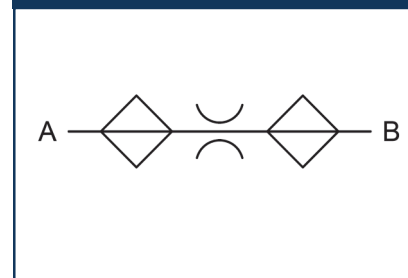
FLOW: SEE TAB BLOCK ± 5% GPM AT 3000 PSID MAX (ON NEXT PAGE)

FILTRATION: FOR -.020 THRU -.075: .008 TO .012 OPENINGS

FOR -.080 THRU -.300: .004 TO .006 OPENINGS

WEIGHT: .039 LBS MAX

HYDRAULIC SCHEMATIC



CATEGORY 3: TWO-WAY RESTRICTOR VALVES FILTERED



PART NUMBER: 6F4652-X, RESTRICTOR VALVE, TWO-WAY, FILTERED

| CRISSAIR PART NO. | FLOW GPM | ORIFICE Ø | LOHM (REF) |
|-------------------|----------|-----------|------------|
| 6F4652-020 | 5.340 | .070 | 200 |
| 6F4652-022 | 4.860 | .067 | 220 |
| 6F4652-024 | 4.450 | .064 | 240 |
| 6F4652-026 | 4.110 | .062 | 260 |
| 6F4652-028 | 3.820 | .060 | 280 |
| 6F4652-030 | 3.560 | .057 | 300 |
| 6F4652-032 | 3.340 | .056 | 320 |
| 6F4652-034 | 3.140 | .054 | 340 |
| 6F4652-036 | 2.970 | .052 | 360 |
| 6F4652-038 | 2.810 | .051 | 380 |
| 6F4652-040 | 2.670 | .050 | 400 |
| 6F4652-042 | 2.540 | .049 | 420 |
| 6F4652-044 | 2.430 | .047 | 440 |
| 6F4652-046 | 2.320 | .046 | 460 |
| 6F4652-048 | 2.230 | .045 | 480 |
| 6F4652-050 | 2.140 | .045 | 500 |
| 6F4652-055 | 1.940 | .042 | 550 |
| 6F4652-060 | 1.780 | .041 | 600 |
| 6F4652-065 | 1.640 | .039 | 650 |
| 6F4652-070 | 1.530 | .038 | 700 |

| CRISSAIR PART NO. | FLOW GPM | ORIFICE Ø | LOHM (REF) |
|-------------------|----------|-----------|------------|
| 6F4652-075 | 1.420 | .036 | 750 |
| 6F4652-080 | 1.340 | .035 | 800 |
| 6F4652-085 | 1.260 | .034 | 850 |
| 6F4652-090 | 1.190 | .033 | 900 |
| 6F4652-095 | 1.120 | .032 | 950 |
| 6F4652-100 | 1.070 | .031 | 1000 |
| 6F4652-105 | 1.020 | .031 | 1050 |
| 6F4652-110 | .970 | .030 | 1100 |
| 6F4652-115 | .930 | .029 | 1150 |
| 6F4652-120 | .890 | .029 | 1200 |
| 6F4652-125 | .850 | .028 | 1250 |
| 6F4652-130 | .820 | .028 | 1300 |
| 6F4652-135 | .790 | .027 | 1350 |
| 6F4652-140 | .760 | .027 | 1400 |
| 6F4652-145 | .740 | .026 | 1450 |
| 6F4652-150 | .710 | .026 | 1500 |
| 6F4652-155 | .690 | .025 | 1550 |
| 6F4652-160 | .670 | .025 | 1600 |
| 6F4652-165 | .650 | .025 | 1650 |
| 6F4652-170 | .630 | .024 | 1700 |

| CRISSAIR PART NO. | FLOW GPM | ORIFICE Ø | LOHM (REF) |
|-------------------|----------|-----------|------------|
| 6F4652-175 | .610 | .024 | 1750 |
| 6F4652-180 | .590 | .023 | 1800 |
| 6F4652-185 | .580 | .023 | 1850 |
| 6F4652-190 | .560 | .023 | 1900 |
| 6F4652-195 | .550 | .023 | 1950 |
| 6F4652-200 | .530 | .022 | 2000 |
| 6F4652-210 | .510 | .022 | 2100 |
| 6F4652-220 | .490 | .021 | 2200 |
| 6F4652-230 | .460 | .021 | 2300 |
| 6F4652-240 | .450 | .020 | 3400 |
| 6F4652-250 | .430 | .020 | 2500 |
| 6F4652-260 | .410 | .020 | 2600 |
| 6F4652-270 | .400 | .019 | 2700 |
| 6F4652-280 | .380 | .019 | 2800 |
| 6F4652-290 | .370 | .018 | 2900 |
| 6F4652-300 | .360 | .018 | 3000 |
| | | | |
| | | | |
| | | | |
| | | | |

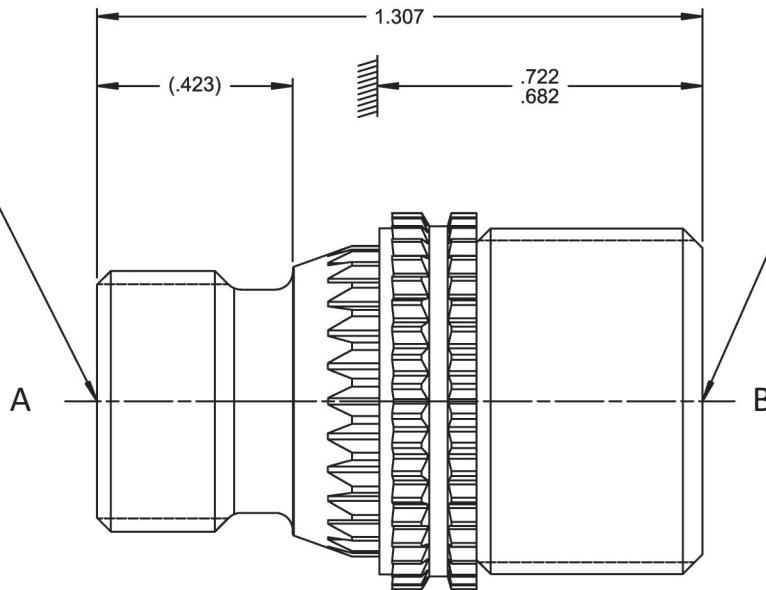


PART NUMBER: 6F4654-X, RESTRICTOR VALVE, TWO-WAY, FILTERED

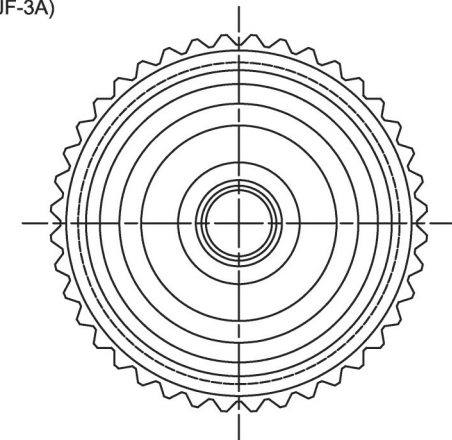


ISOMETRIC VIEW FOR REFERENCE ONLY

FITTING END TO MATE WITH ABS0919-08 BOSS (.5625-18 UNJF-3A)



FITTING END PER prEN6079-08 EXCEPT AS SHOWN (.7500-16 UNJF-3A)



PERFORMANCE SPECIFICATIONS:

FLUIDS: ANY AIRCRAFT HYDRAULIC FLUID

MATERIAL: BODY 6AL-4V TI

LOCKRING A-286 CRES

TEMPERATURE RANGE: -65°F TO 230°F

OPERATING PRESSURE: 3030 PSIG

PROOF PRESSURE: 4570 PSIG

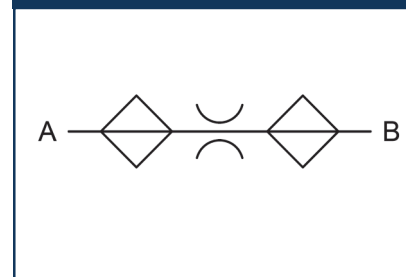
FLOW: SEE TAB BLOCK ± 5% GPM AT 3000 PSID MAX (ON NEXT PAGE)

FILTRATION: FOR -020 THRU -105: .008 TO .012 OPENINGS

FOR -110 THRU -300: .004 TO .006 OPENINGS

WEIGHT: .069 LBS MAX

HYDRAULIC SCHEMATIC



CATEGORY 3: TWO-WAY RESTRICTOR VALVES FILTERED



PART NUMBER: 6F4654-X, RESTRICTOR VALVE, TWO-WAY, FILTERED

| CRISSAIR PART NO. | FLOW GPM | ORIFICE Ø | LOHM (REF) |
|-------------------|----------|-----------|------------|
| 6F4654-020 | 5.340 | .070 | 200 |
| 6F4654-022 | 4.860 | .067 | 220 |
| 6F4654-024 | 4.450 | .064 | 240 |
| 6F4654-026 | 4.110 | .062 | 260 |
| 6F4654-028 | 3.820 | .060 | 280 |
| 6F4654-030 | 3.560 | .057 | 300 |
| 6F4654-032 | 3.340 | .056 | 320 |
| 6F4654-034 | 3.140 | .054 | 340 |
| 6F4654-036 | 2.970 | .052 | 360 |
| 6F4654-038 | 2.810 | .051 | 380 |
| 6F4654-040 | 2.670 | .050 | 400 |
| 6F4654-042 | 2.540 | .049 | 420 |
| 6F4654-044 | 2.430 | .047 | 440 |
| 6F4654-046 | 2.320 | .046 | 460 |
| 6F4654-048 | 2.230 | .045 | 480 |
| 6F4654-050 | 2.140 | .045 | 500 |
| 6F4654-055 | 1.940 | .042 | 550 |
| 6F4654-060 | 1.780 | .041 | 600 |
| 6F4654-065 | 1.640 | .039 | 650 |
| 6F4654-070 | 1.530 | .038 | 700 |

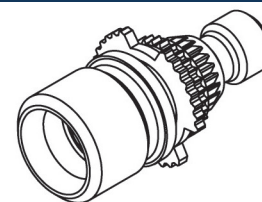
| CRISSAIR PART NO. | FLOW GPM | ORIFICE Ø | LOHM (REF) |
|-------------------|----------|-----------|------------|
| 6F4654-075 | 1.420 | .036 | 750 |
| 6F4654-080 | 1.340 | .035 | 800 |
| 6F4654-085 | 1.260 | .034 | 850 |
| 6F4654-090 | 1.190 | .033 | 900 |
| 6F4654-095 | 1.120 | .032 | 950 |
| 6F4654-100 | 1.070 | .031 | 1000 |
| 6F4654-105 | 1.020 | .031 | 1050 |
| 6F4654-110 | .970 | .030 | 1100 |
| 6F4654-115 | .930 | .029 | 1150 |
| 6F4654-120 | .890 | .029 | 1200 |
| 6F4654-125 | .850 | .028 | 1250 |
| 6F4654-130 | .820 | .028 | 1300 |
| 6F4654-135 | .790 | .027 | 1350 |
| 6F4654-140 | .760 | .027 | 1400 |
| 6F4654-145 | .740 | .026 | 1450 |
| 6F4654-150 | .710 | .026 | 1500 |
| 6F4654-155 | .690 | .025 | 1550 |
| 6F4654-160 | .670 | .025 | 1600 |
| 6F4654-165 | .650 | .025 | 1650 |
| 6F4654-170 | .630 | .024 | 1700 |

| CRISSAIR PART NO. | FLOW GPM | ORIFICE Ø | LOHM (REF) |
|-------------------|----------|-----------|------------|
| 6F4654-175 | .610 | .024 | 1750 |
| 6F4654-180 | .590 | .023 | 1800 |
| 6F4654-185 | .580 | .023 | 1850 |
| 6F4654-190 | .560 | .023 | 1900 |
| 6F4654-195 | .550 | .023 | 1950 |
| 6F4654-200 | .530 | .022 | 2000 |
| 6F4654-210 | .510 | .022 | 2100 |
| 6F4654-220 | .490 | .021 | 2200 |
| 6F4654-230 | .460 | .021 | 2300 |
| 6F4654-240 | .450 | .020 | 3400 |
| 6F4654-250 | .430 | .020 | 2500 |
| 6F4654-260 | .410 | .020 | 2600 |
| 6F4654-270 | .400 | .019 | 2700 |
| 6F4654-280 | .380 | .019 | 2800 |
| 6F4654-290 | .370 | .018 | 2900 |
| 6F4654-300 | .360 | .018 | 3000 |
| | | | |
| | | | |
| | | | |
| | | | |

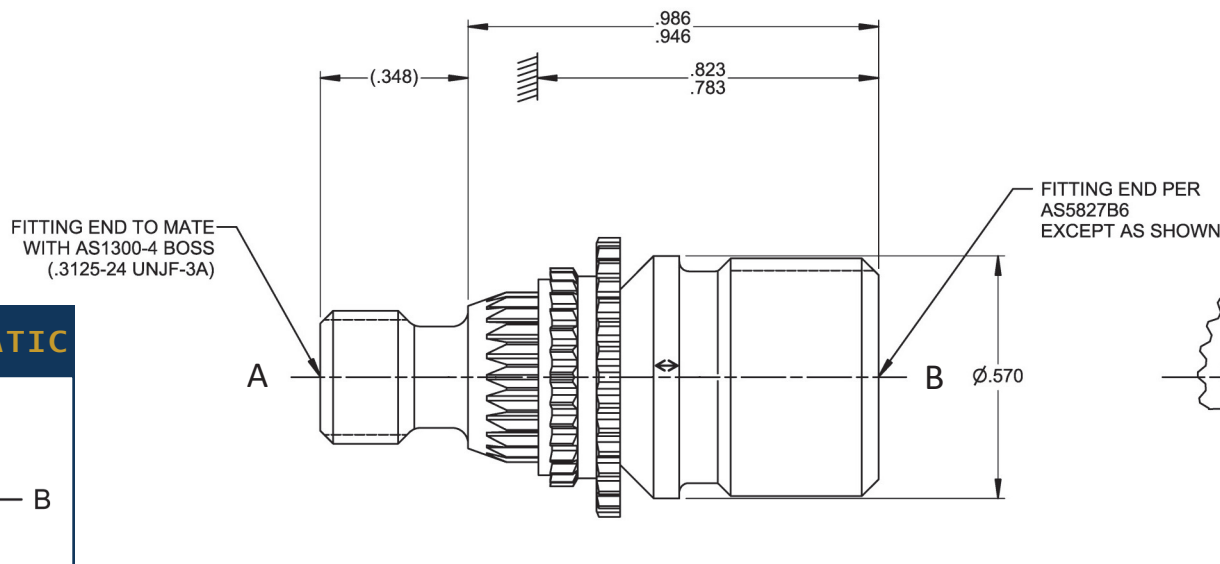
CATEGORY 3: TWO-WAY RESTRICTOR VALVES FILTERED



PART NUMBER: 6F4724-X, RESTRICTOR VALVE, TWO-WAY, FILTERED



ISOMETRIC VIEW
FOR REFERENCE ONLY



HYDRAULIC SCHEMATIC



PERFORMANCE SPECIFICATIONS:

FLUIDS: ANY AIRCRAFT HYDRAULIC FLUID
 MATERIAL: BODY 6AL -4V TI
 TEMPERATURE RANGE: -65°F TO 275°F
 OPERATING PRESSURE: 5000 PSIG
 PROOF PRESSURE: 7500 PSIG
 FLOW: SEE TAB BLOCK
 FILTRATION: .008 TO .012 OPENINGS
 WEIGHT: .033 LBS MAX

| CRISSAIR PART NO. | FLOW GPM | FLOW COEFF VALUE CIS/(PSI) ^{1/2} | FLOW COEFF IN ³ /SEC | ORIFICE Ø | PSID | INLET PSI | BACK PSI |
|-------------------|------------|---|---------------------------------|-----------|------|-----------|----------|
| 6F4724-1 | 0.805 ± 5% | 0.0817 ± 5% | - | .033 | 1439 | - | - |
| 6F4724-2 | 1.960 ± 5% | 0.1462 ± 5% | - | .044 | 2673 | - | - |
| 6F4724-3 | 0.774 ± 5% | 0.0579 ± 5% | - | .028 | 2651 | - | - |
| 6F4724-4 | 2.835 ± 5% | 0.1984 ± 5% | - | .051 | 3006 | - | - |
| 6F4724-5 | 1.169 ± 5% | - | 4.5 ± 5% | .032 | - | 3290 | 50 |
| 6F4724-6 | 4.415 ± 5% | - | 17.0 ± 5% | .056 | - | 5000 | 50 |

CATEGORY 3: TWO-WAY RESTRICTOR VALVES FILTERED



CRISSAIR HAS VARIOUS OTHER RESTRICTOR VALVES NOT LISTED IN THE CATALOG WITH DIFFERENT MATERIALS, FITTINGS, AND SIZE CONFIGURATIONS.

CONTACT CRISSAIR FOR ADDITIONAL INFORMATION/DRAWINGS AT

(661) 367-3300 OR SALES@CRISSAIR.COM.

YOU CAN ALSO VISIT WWW.CRISSAIR.COM.